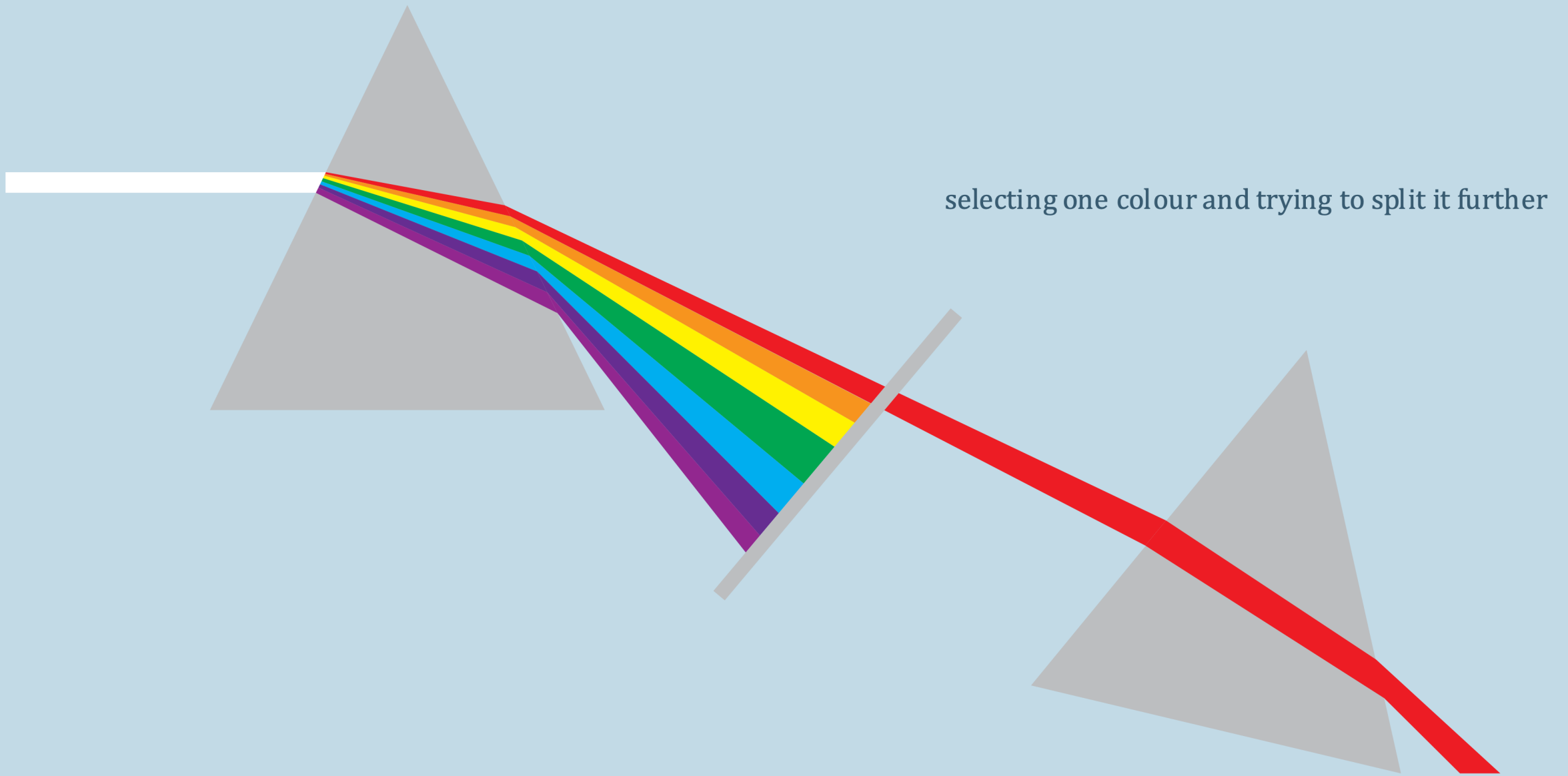


Color Theory (and Practice)

Mary Fran Miklitsch

Isaac Newton Identifies the Spectrum



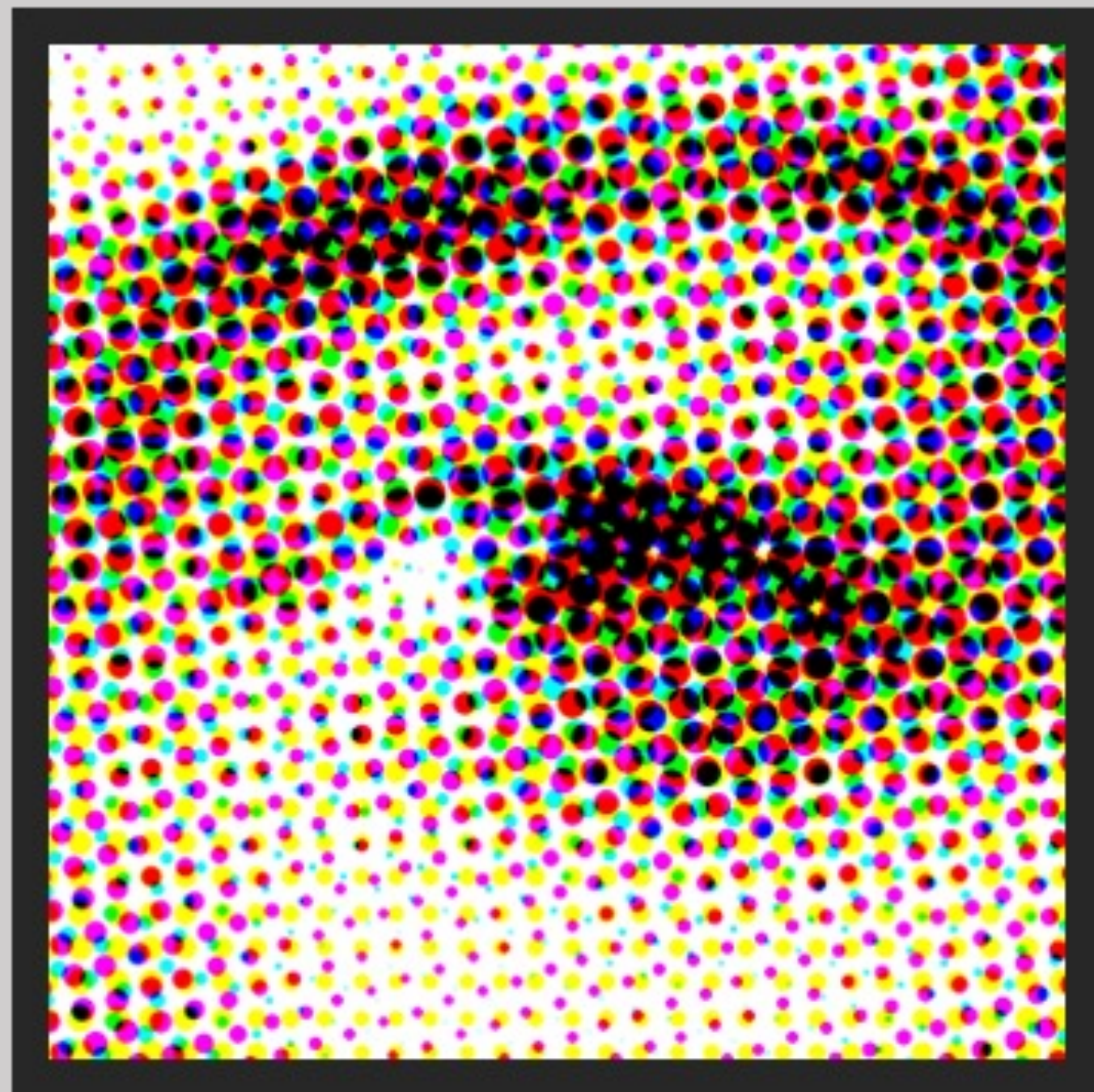
Color Models



CMYK



RGB



Color Systems

PANTONE®

COLOR TOOLS

MARKETPLACE

LEARN

SERVICES



GRAPHIC + DIGITAL

FASHION, HOME + INTERIORS

MUNSELL

LIFESTYLE

PLASTICS



PANTONE FORMULA GUIDE | COATED & UNCOATED
\$ 217.00



PASTELS & NEONS CHIPS | COATED & UNCOATED
\$ 272.00



METALLIC CHIPS BOOK
\$ 423.00

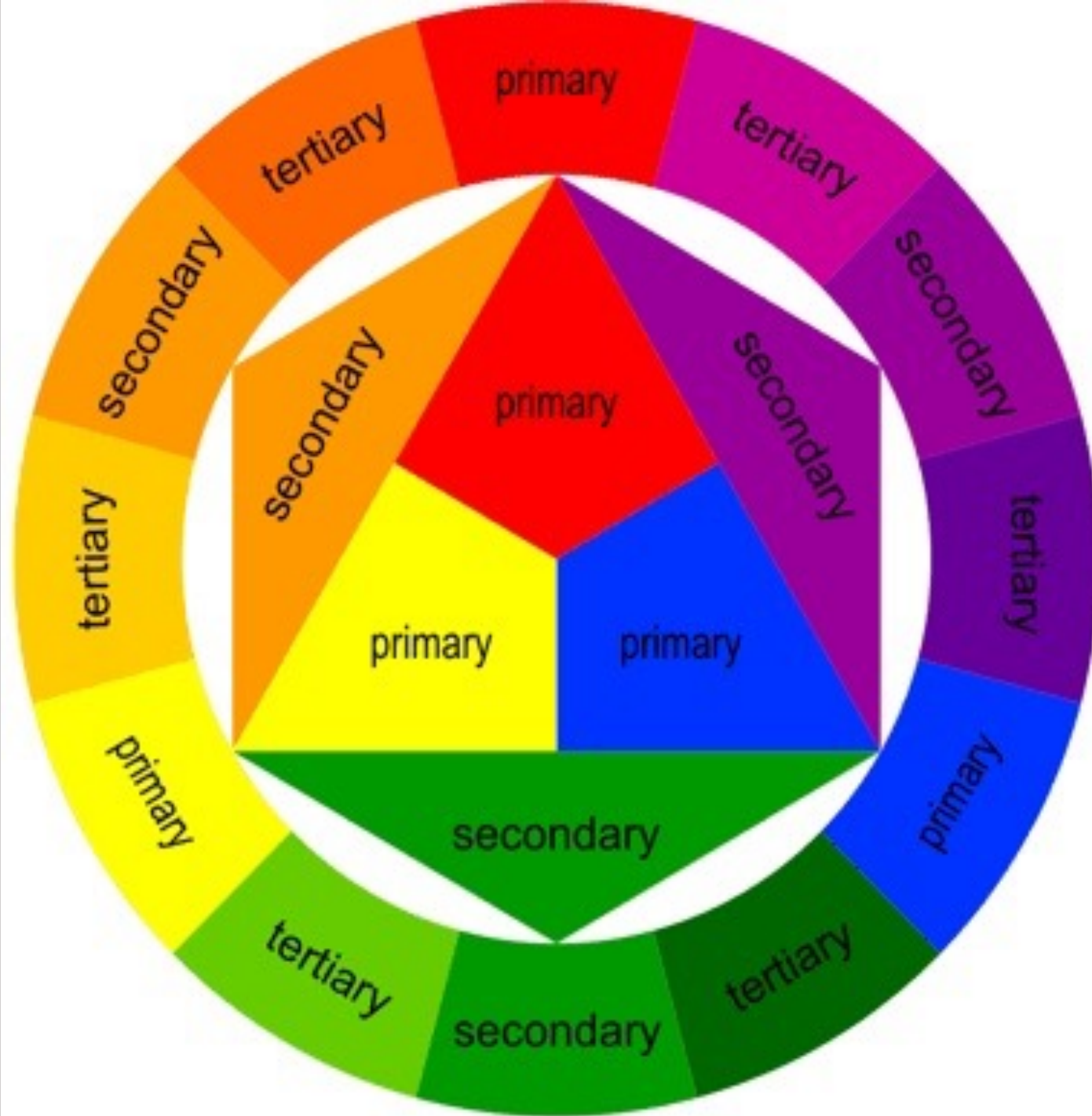


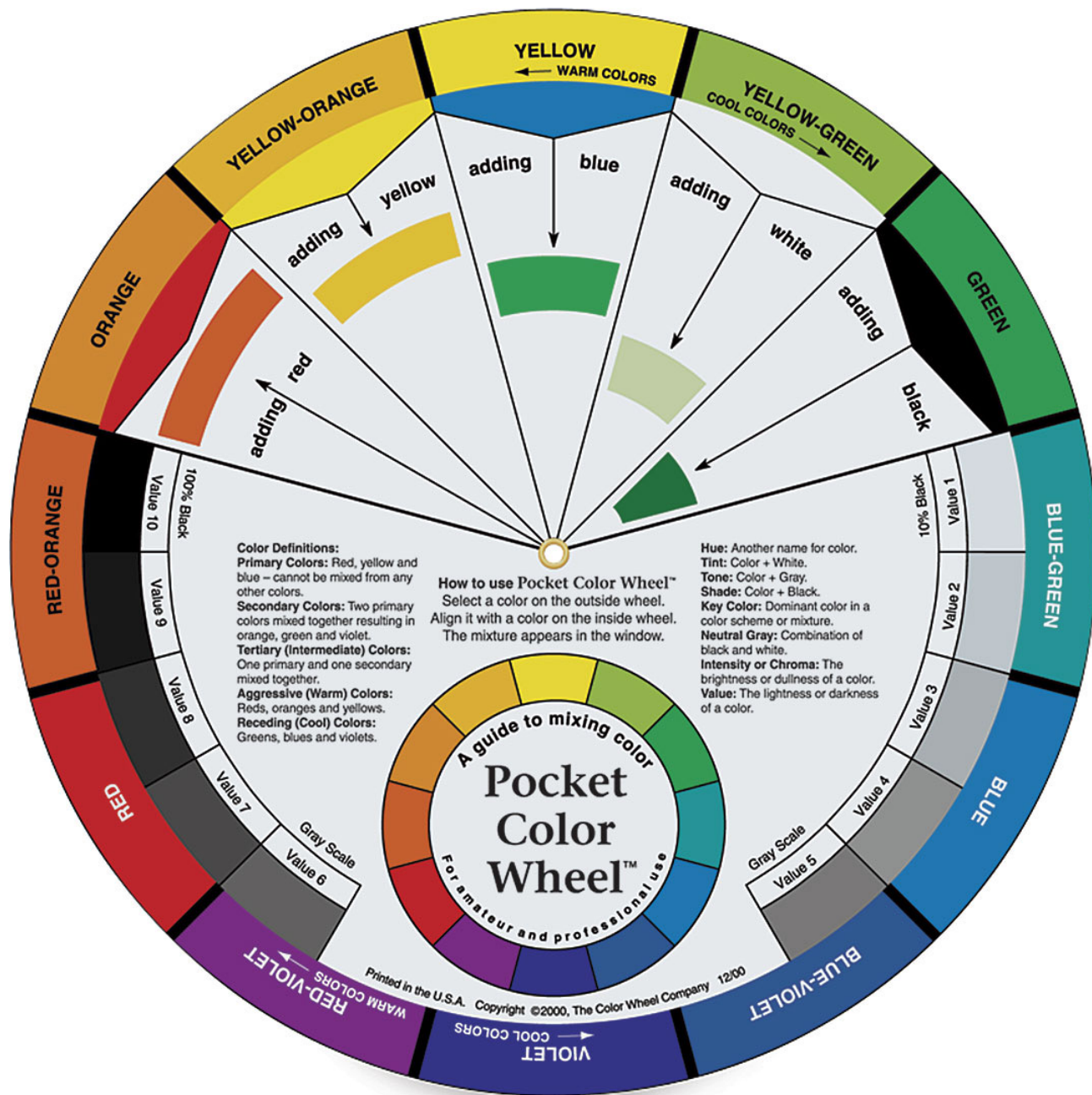
SOLID GUIDE SET
\$ 466.00

SHOP ALL

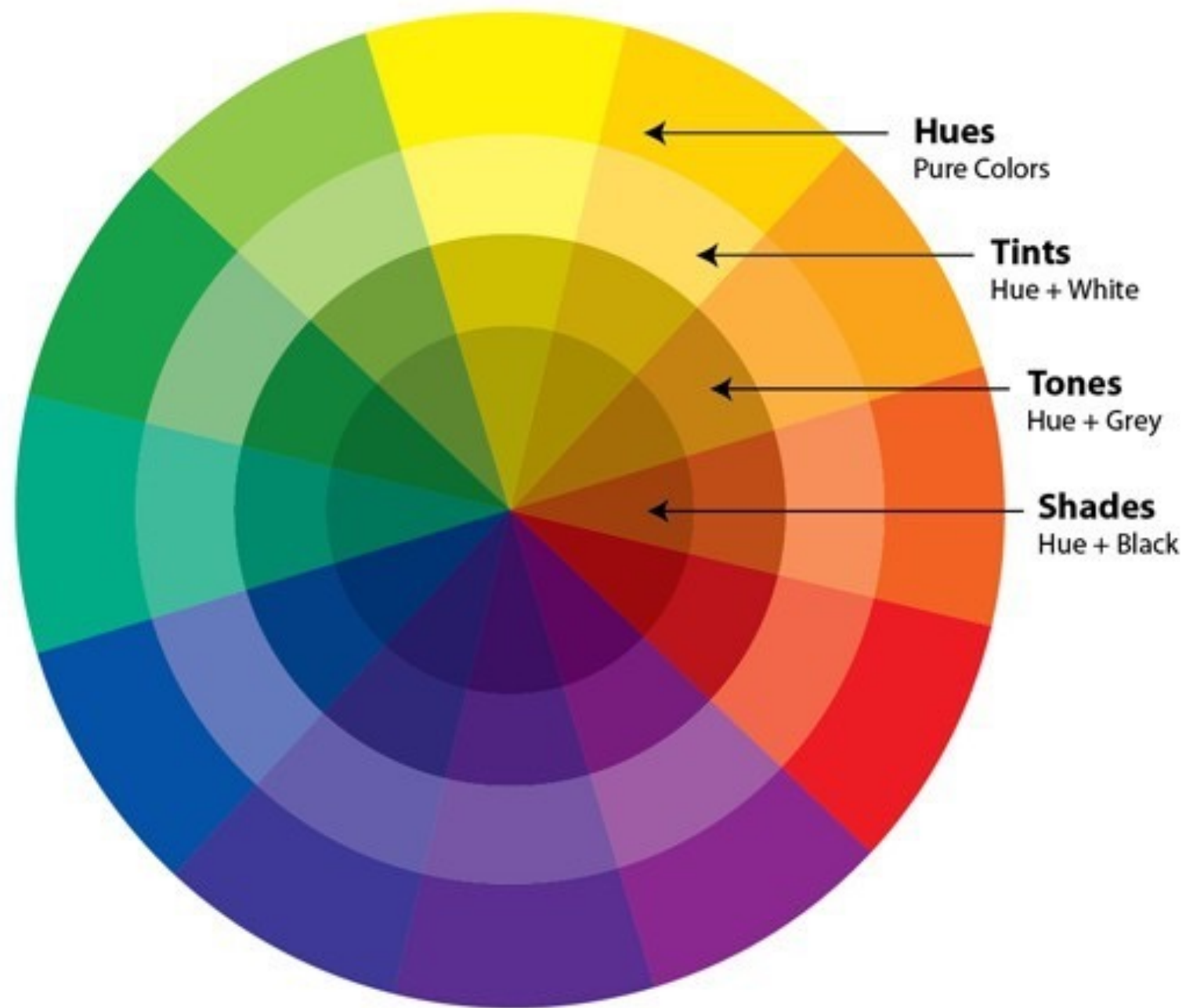


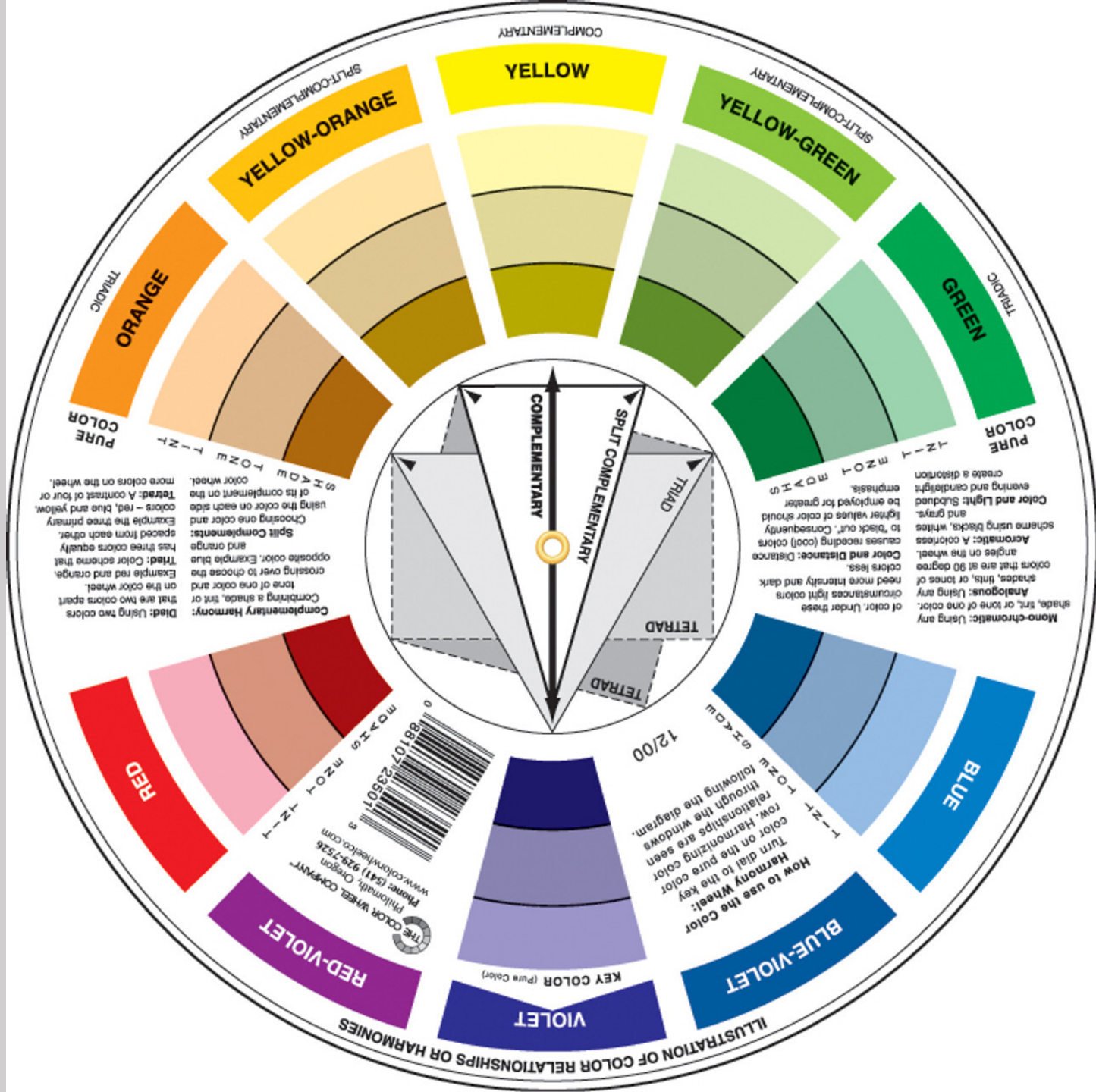
Color Theory: The Color Wheel





Color Theory: Hue Saturation Value



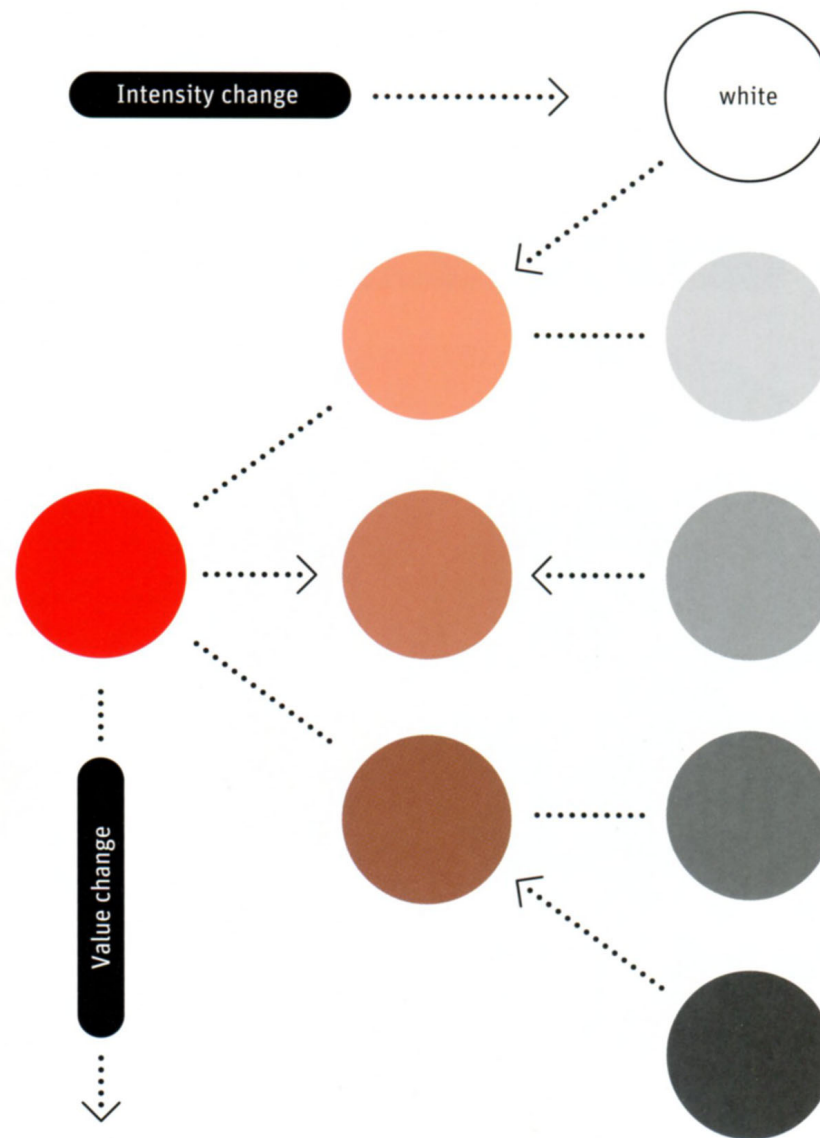


The Properties of Color

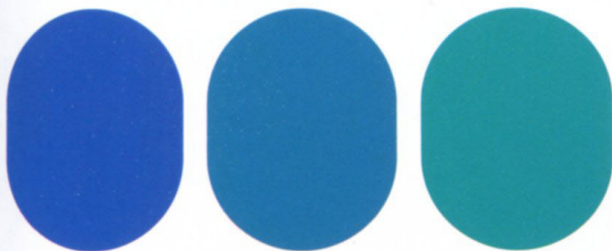
Whether using the additive or subtractive primaries, each color must be described in terms of its physical properties. These properties are independent of each other, and each one must be measured or defined in order to fully describe the color. Scientific descriptions of color, or *colorimetry*, involve the specification of these color properties in either a subjective or objective system of measurement. The subjective system describes color in terms of hue, saturation, and brightness (HSB), while the objective system measures the dominant wavelength, purity, and luminance of colors.

Hue is the common name of a color that indicates its position in the visible spectrum or on the color wheel. Hue is determined by the specific wavelength of the color in a ray of light. The description of a hue can be made more precise in comparison to the next hue (e.g., a certain blue might be more accurately called blue-green). *Saturation* refers to the intensity, strength, purity, or chroma—the absence of black, white, or gray—in a color. A vivid color has high or full saturation, whereas a dull one is de-saturated. Saturation is a measure of the richness of a color. *Brightness*, or value, is the relative degree of lightness or darkness of a color, or its reflective quality or brilliance. A color can be more narrowly described as either light or dark (e.g., light blue or dark blue). The brightness of a color is changed by mixing it with white (to form a *tint*) or with black (to form a *shade*) in varying proportions. Graphic design software programs have tools for varying the HSB of colors.

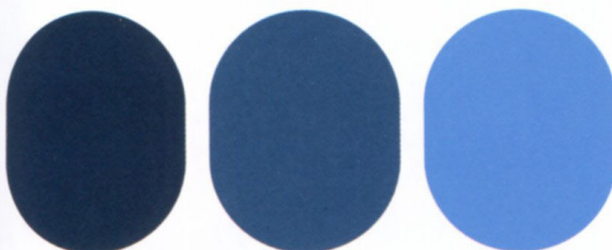
Objective color notation was developed by the Commission Internationale de l'Eclairage (CIE) to provide a mathematical model for describing color. The CIE (in English, the International Commission on Illumination) is an international technical, scientific, and cultural nonprofit organization that sets standards on the science and art of lighting, vision, and colorimetry. Though CIE notation is not used by designers, it underpins color management in modern digital devices.



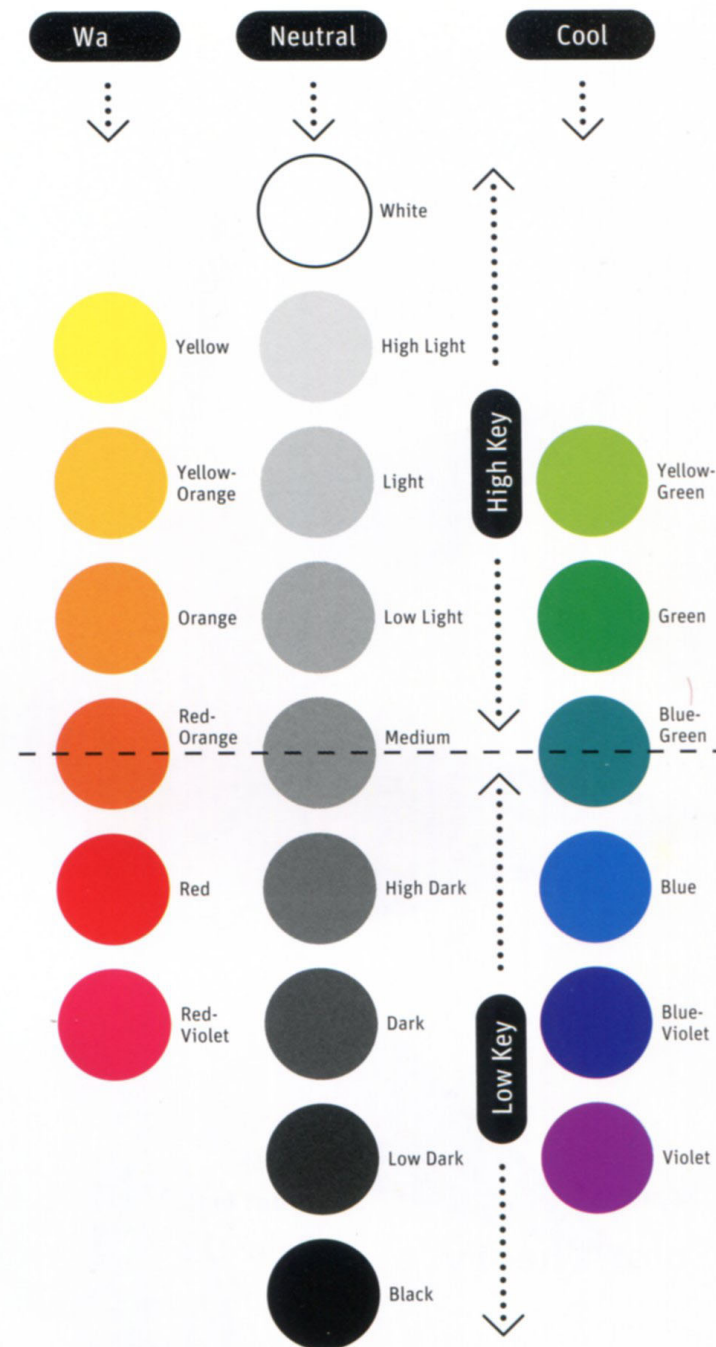
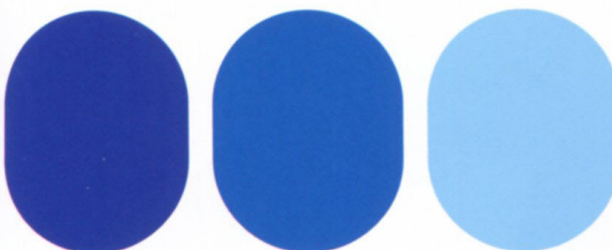
Hue

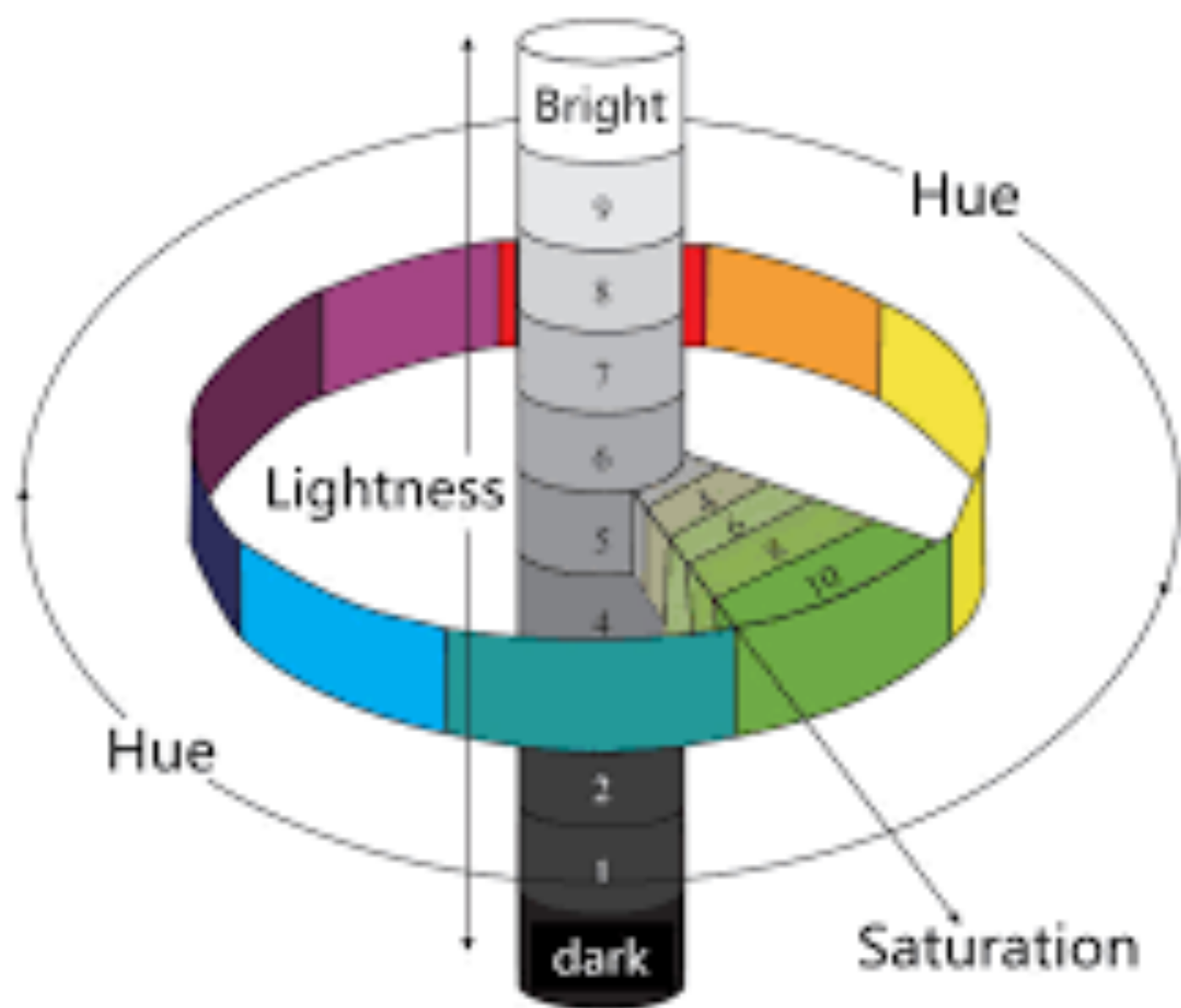


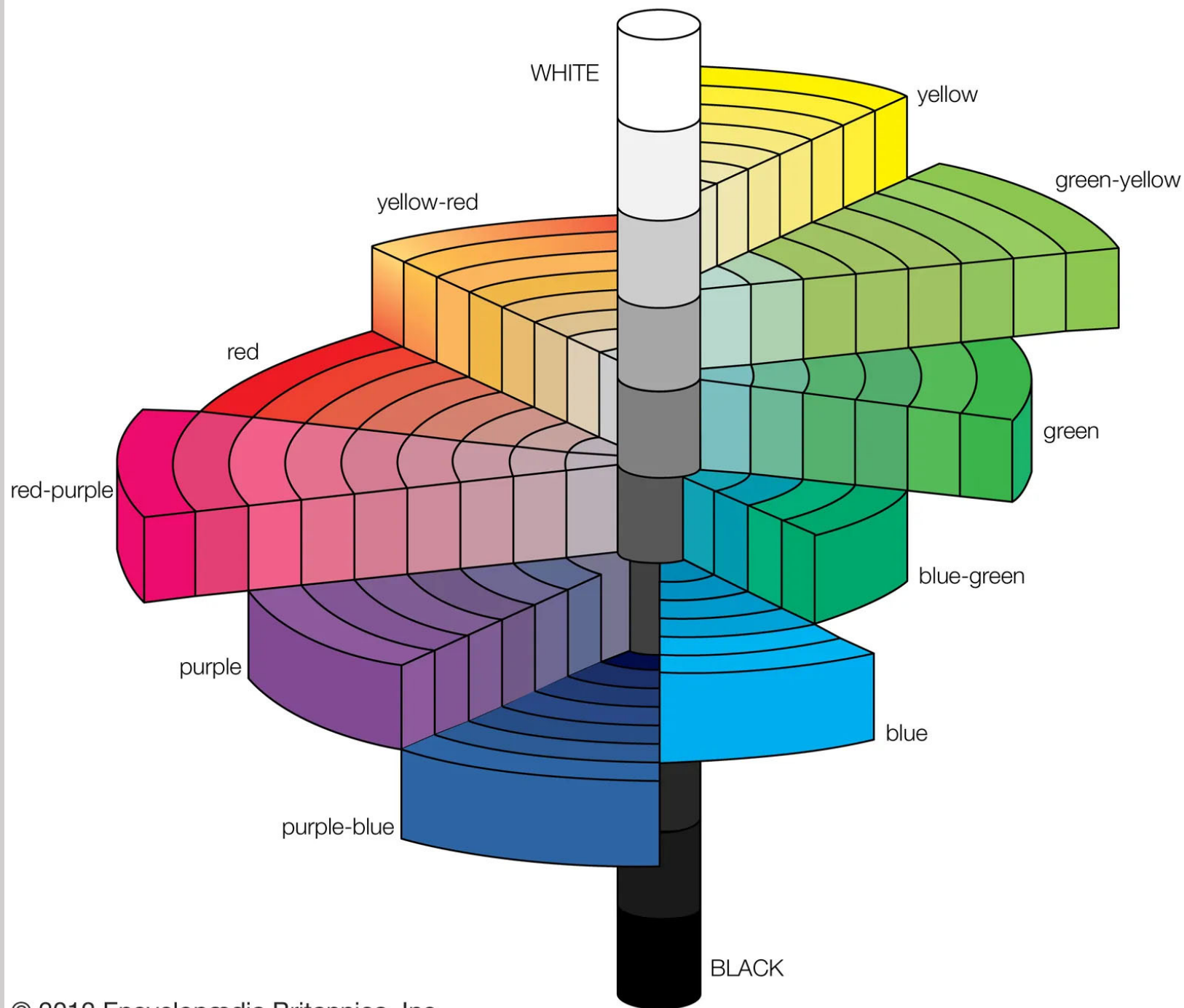
Saturation

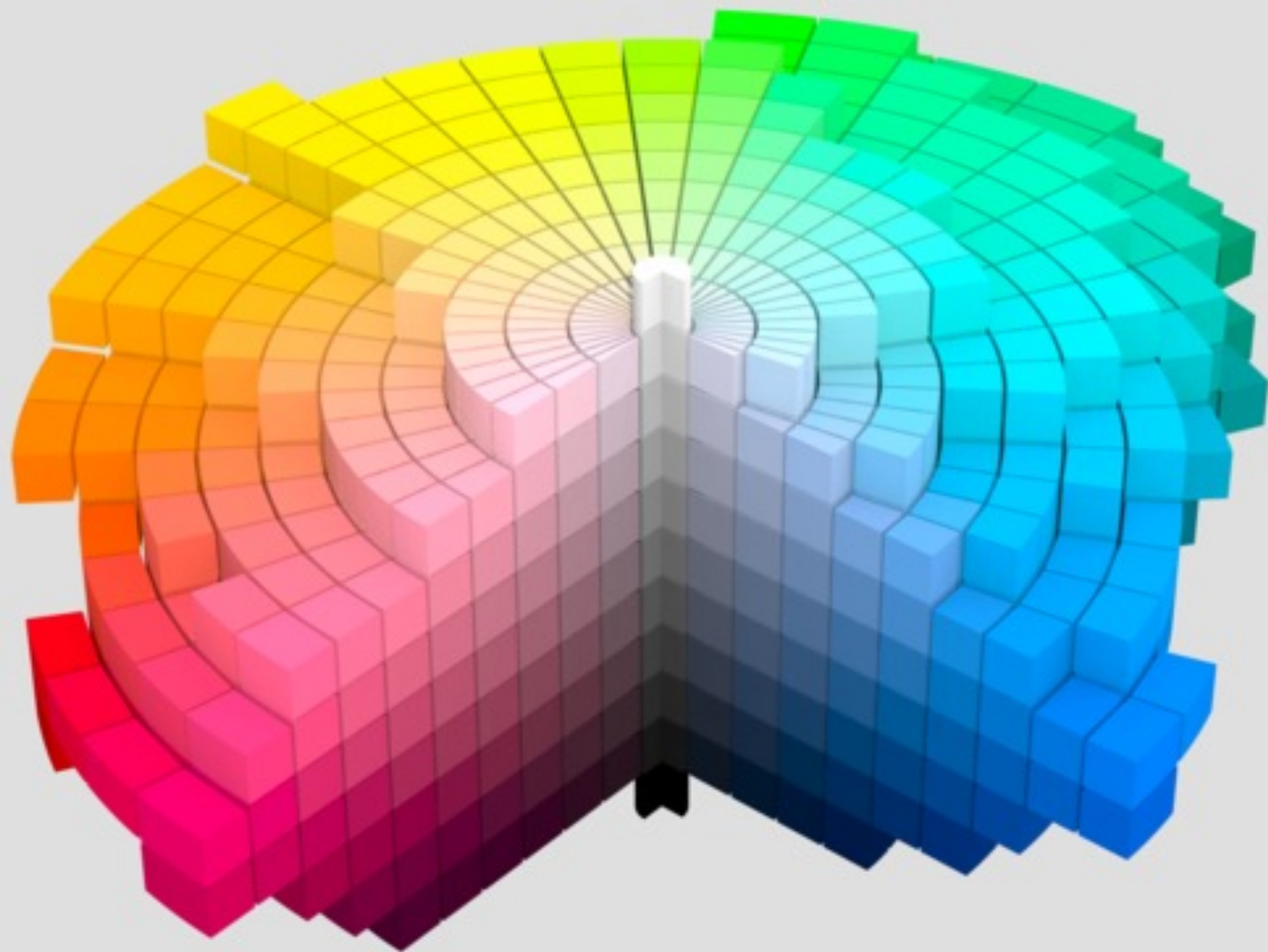


Brightness









Color Theory: Complementary Colors



COMPLEMENTARY COLORS



ANALOGOUS COLORS



TRIADIC COLORS

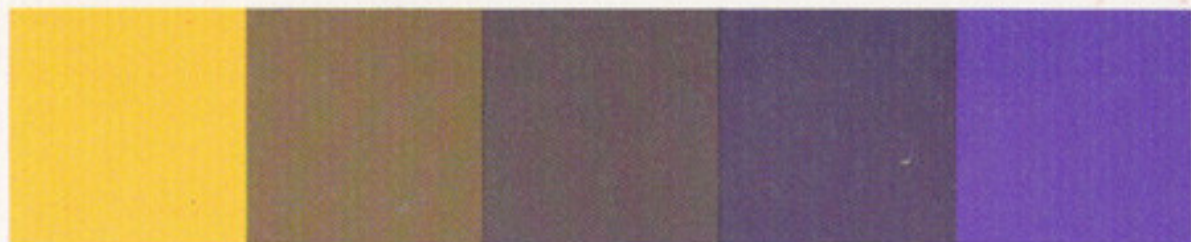


SPLIT-COMPLEMENTARY COLORS



TETRADIC COLORS

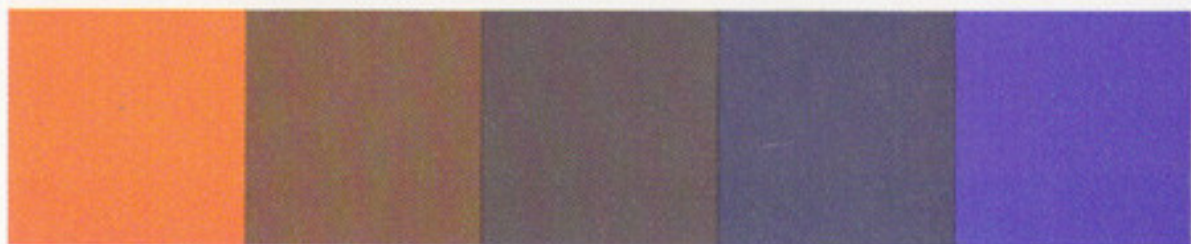




23



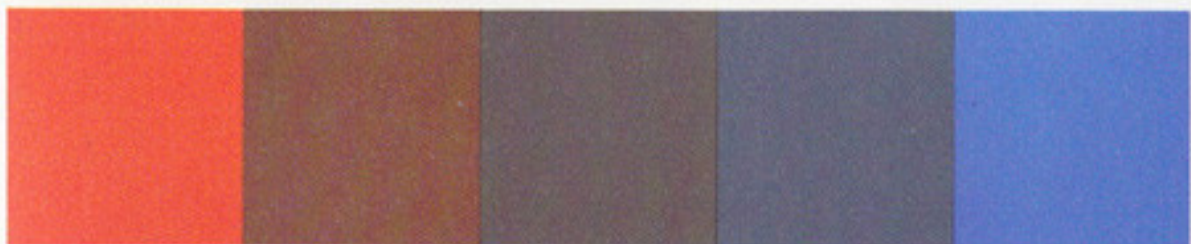
26



24



27



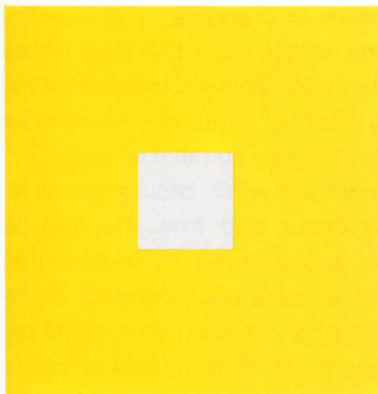
25



28

Albers: Color Studies

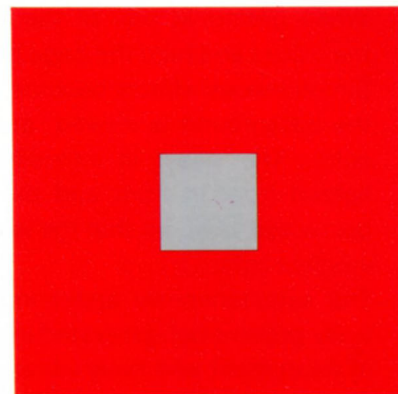
Color Deceives



31



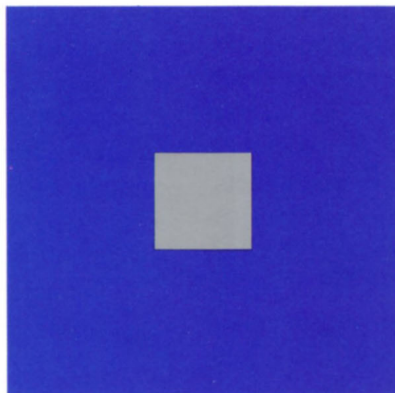
32



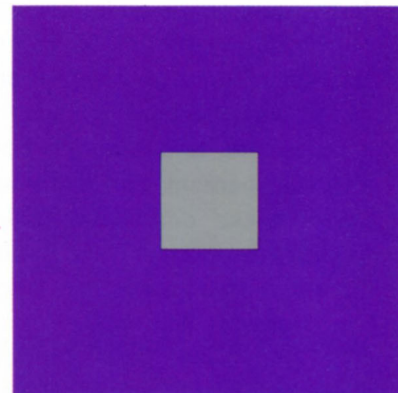
33



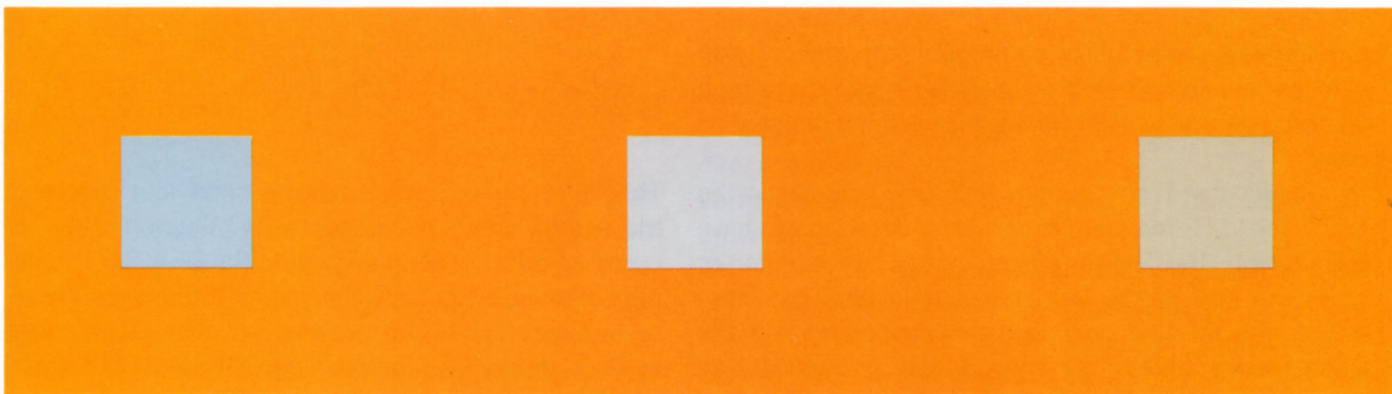
34



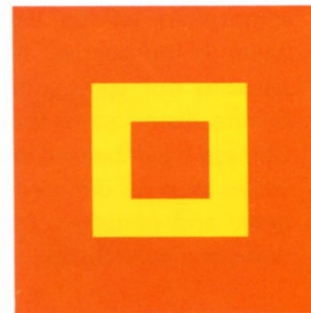
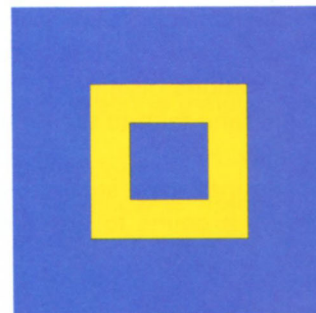
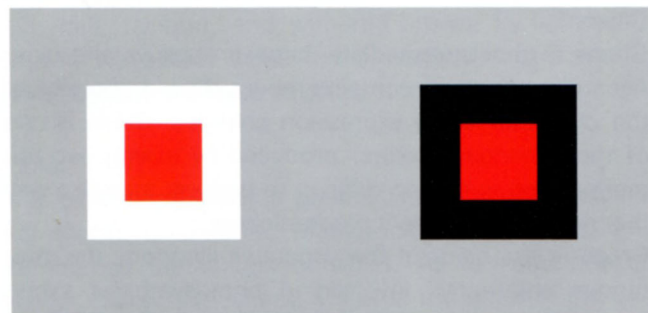
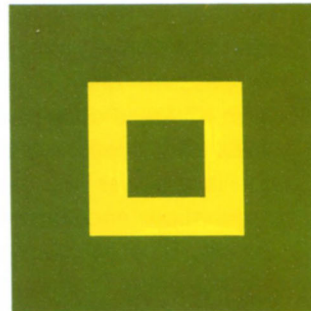
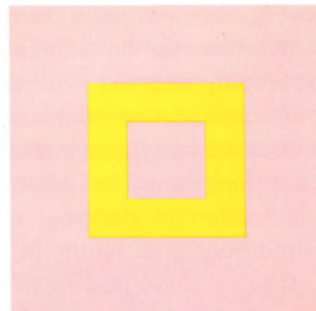
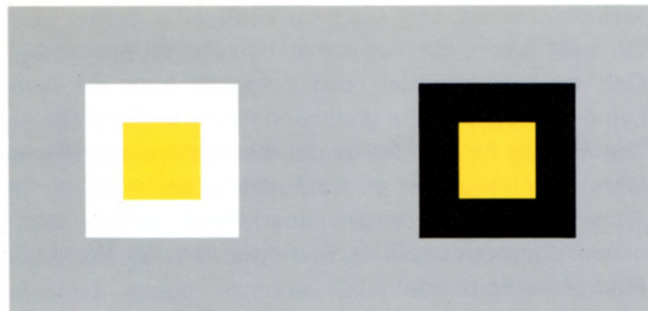
35



36

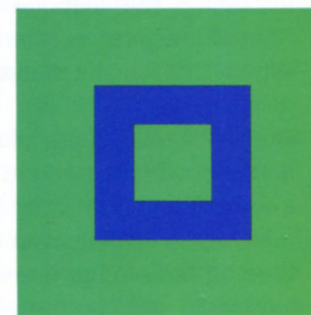
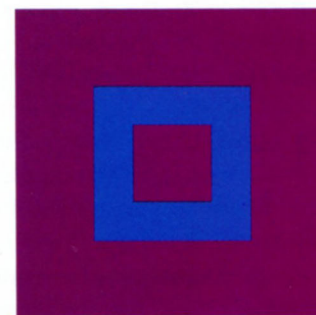
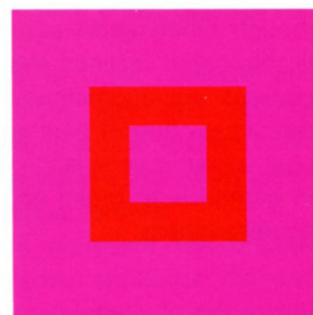
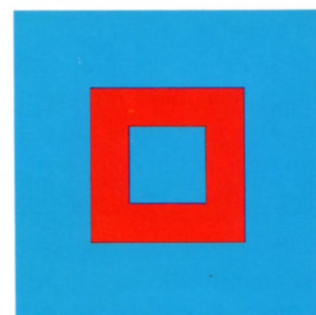
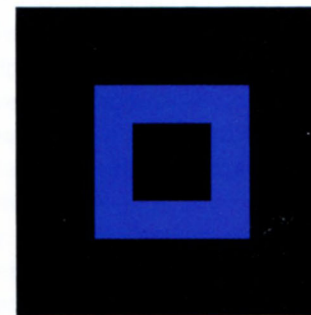
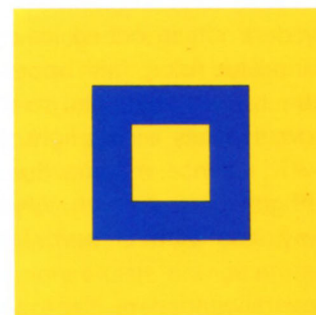
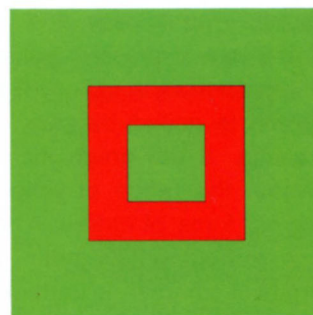
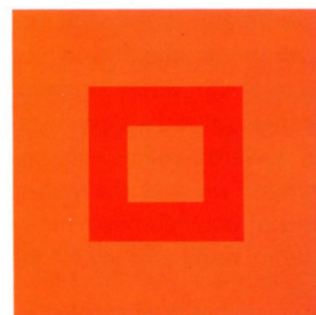


37



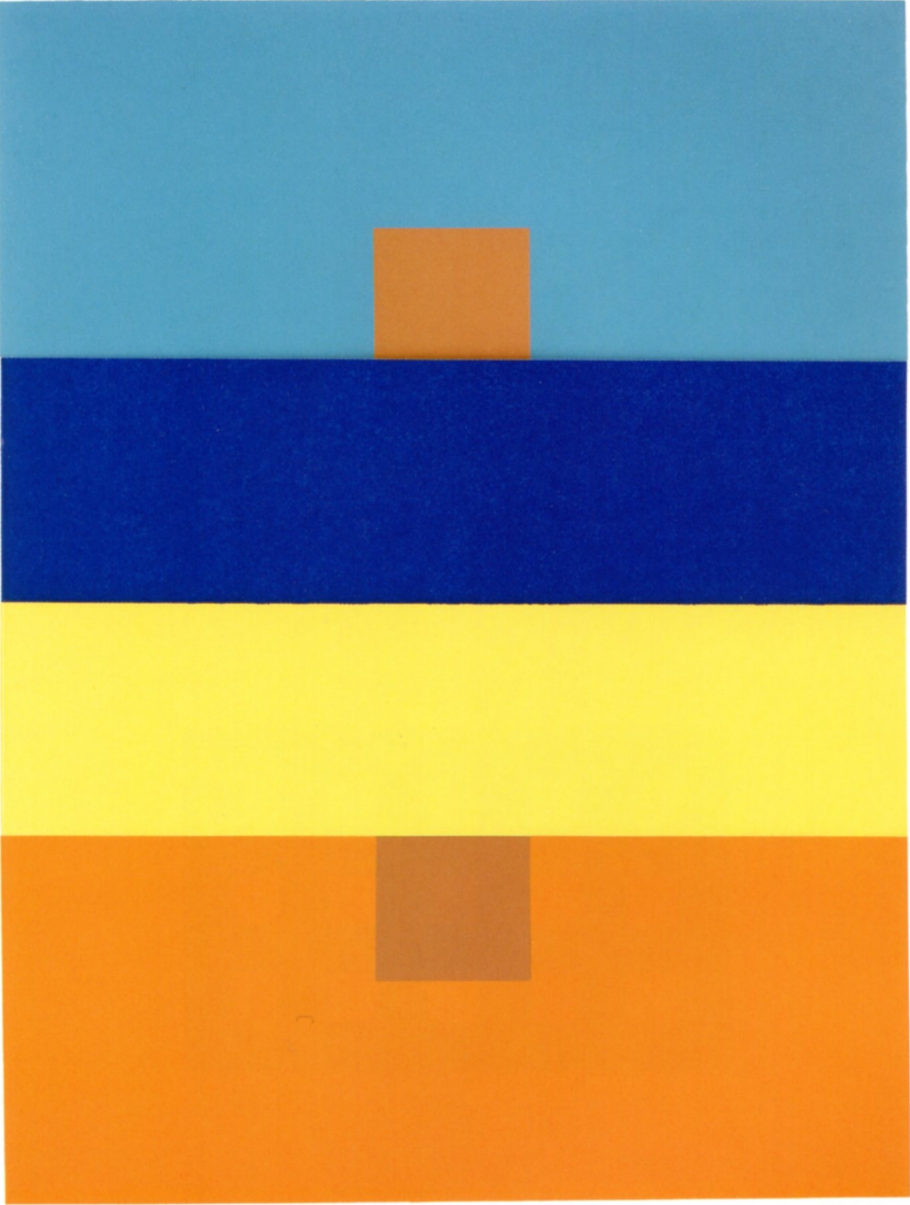
58-59

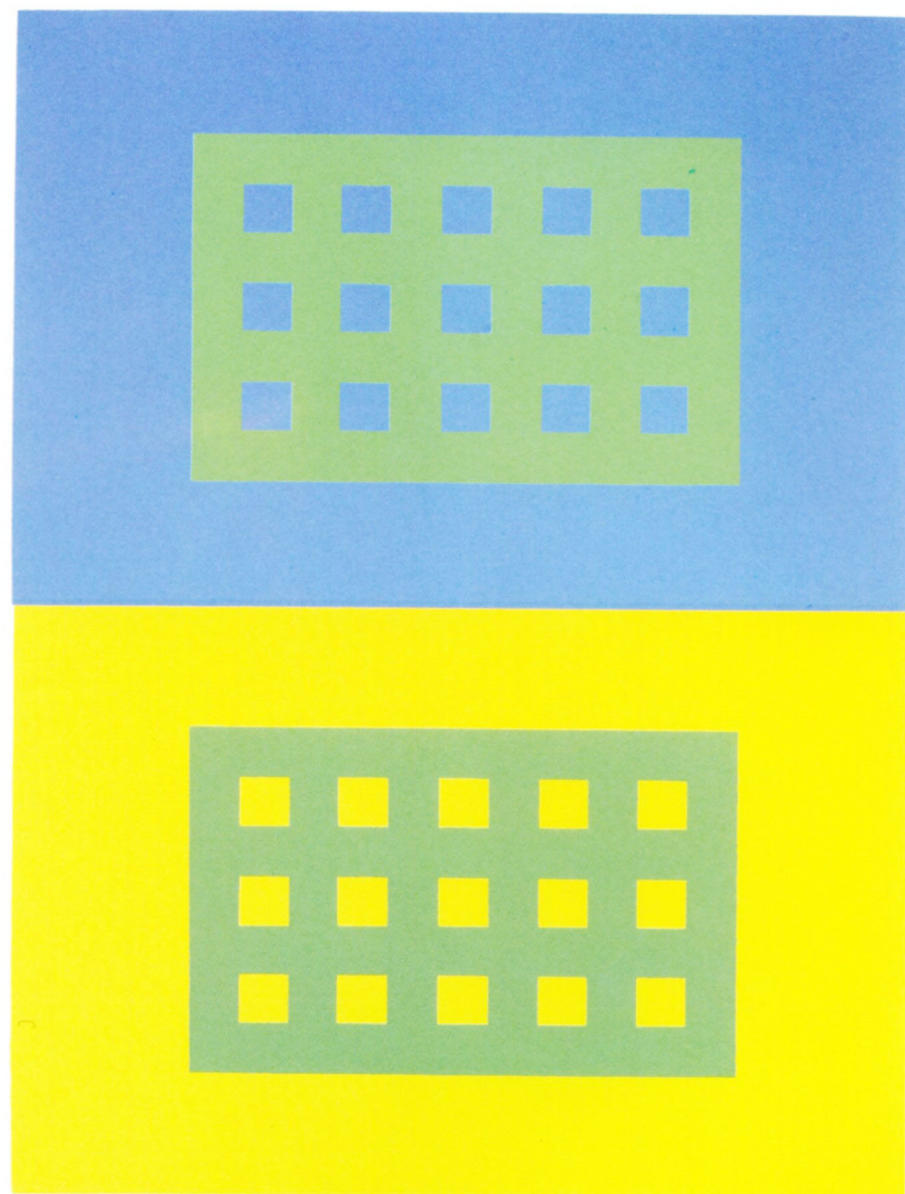
60-63

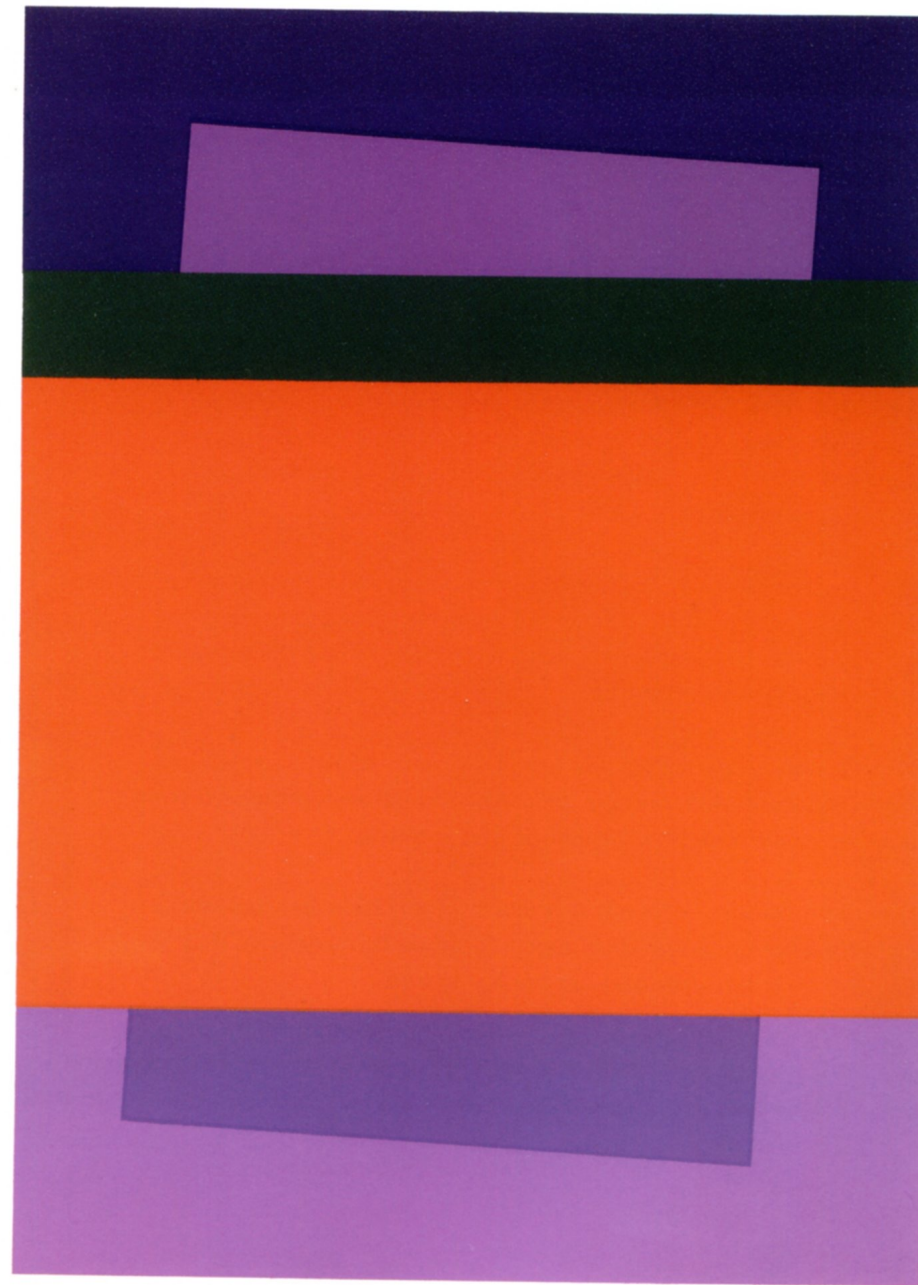


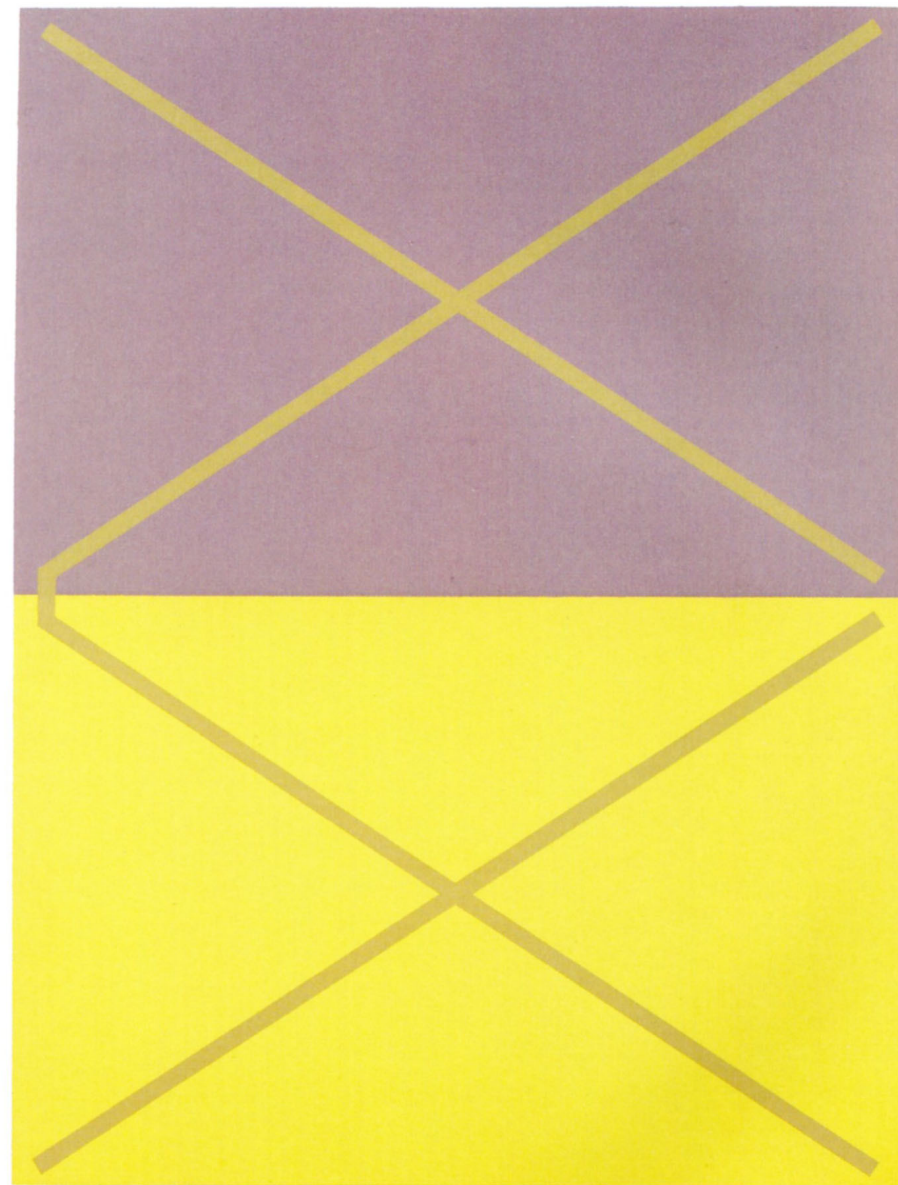
64-67

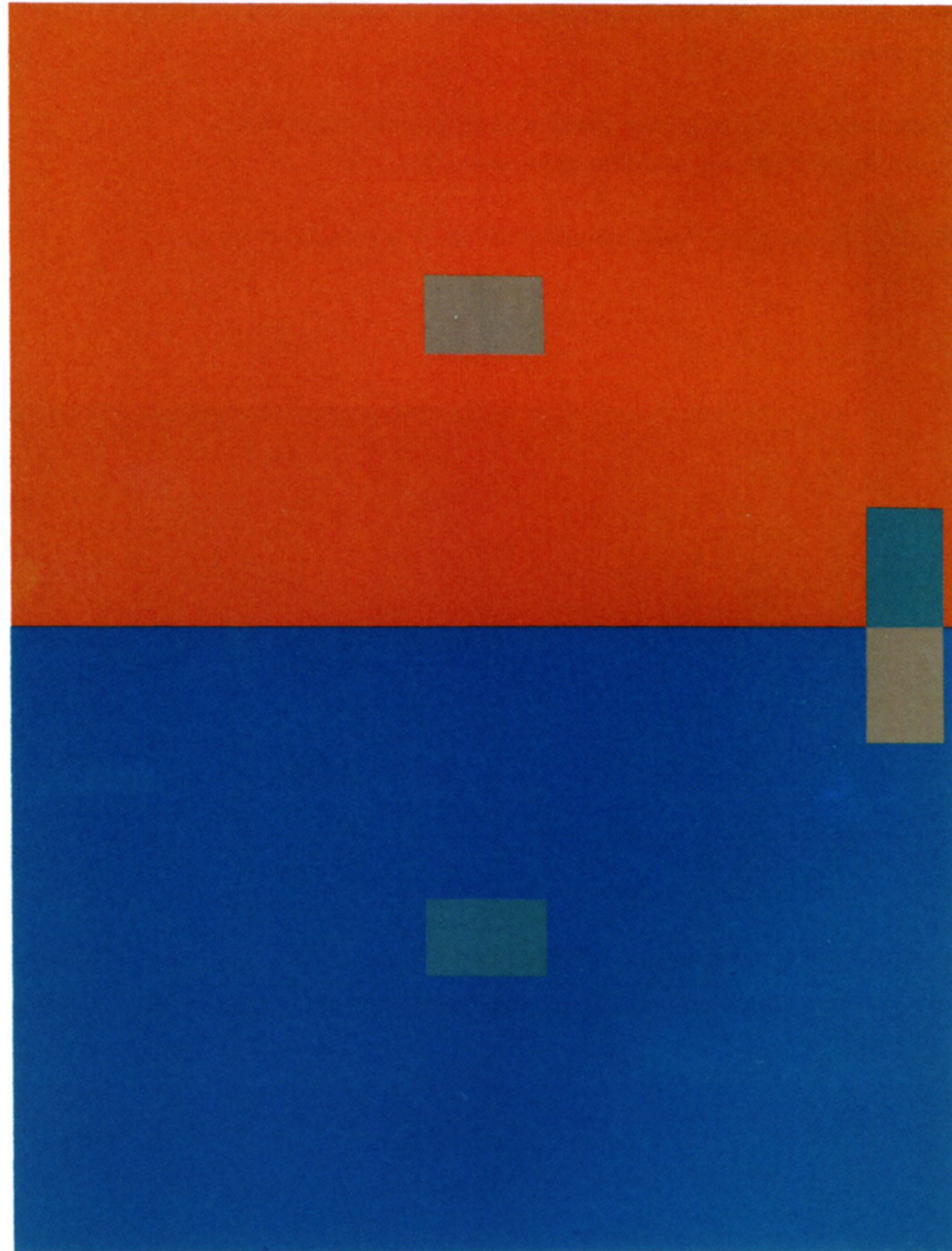
68-71

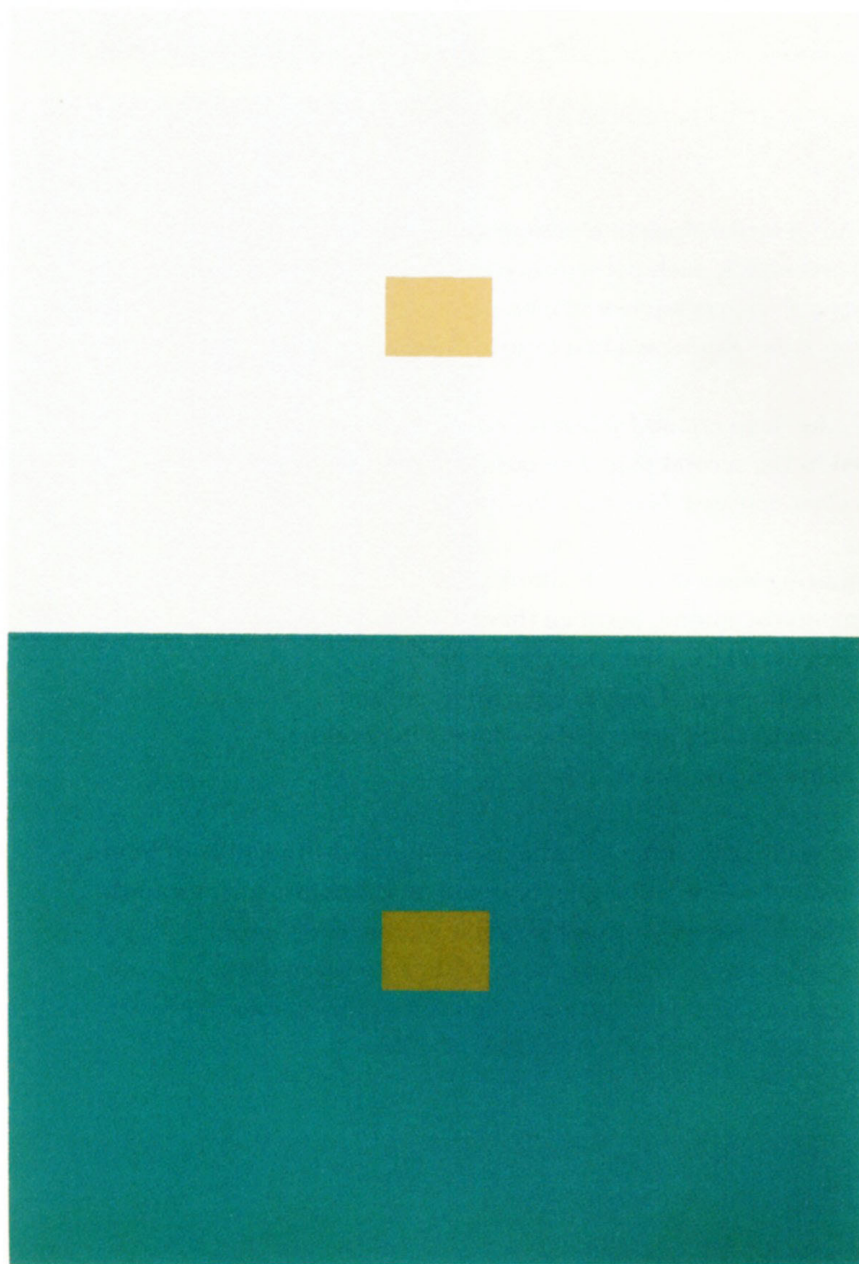


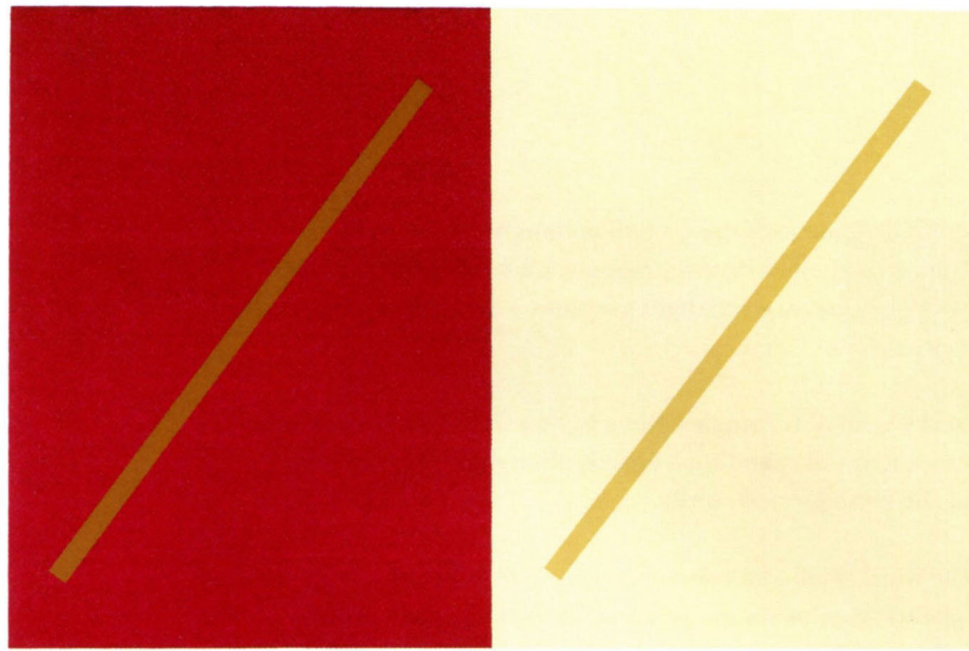


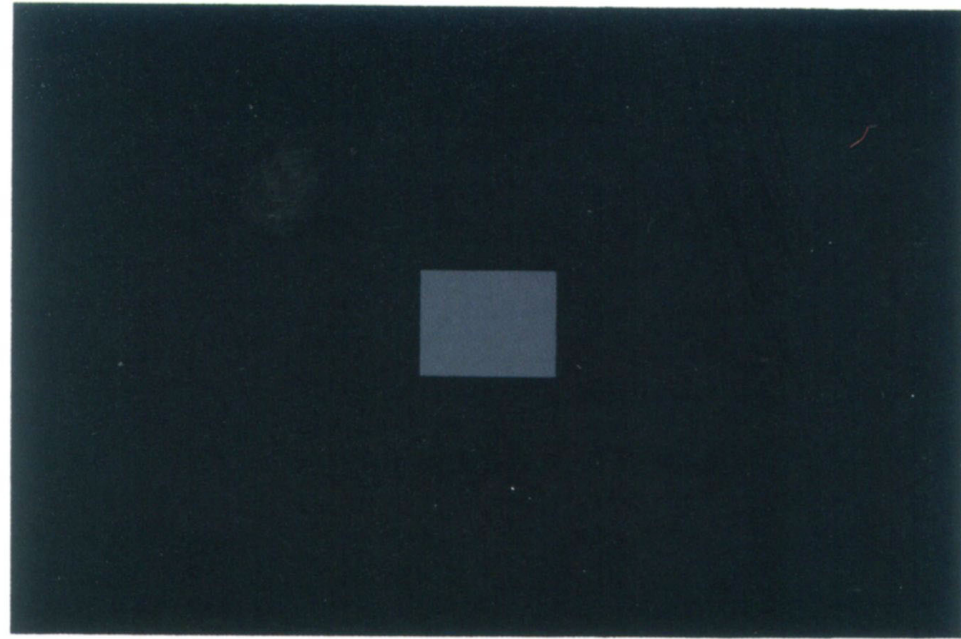




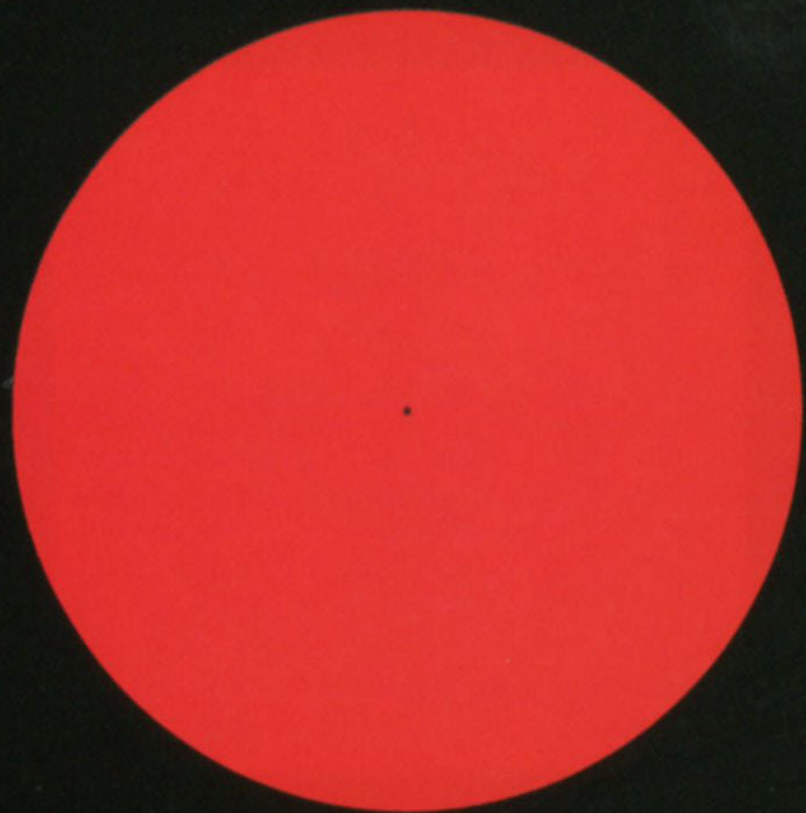


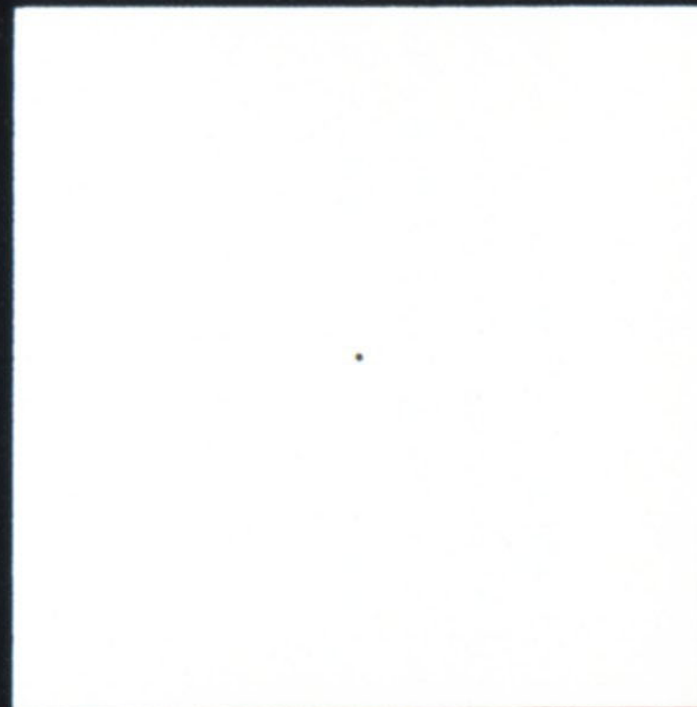
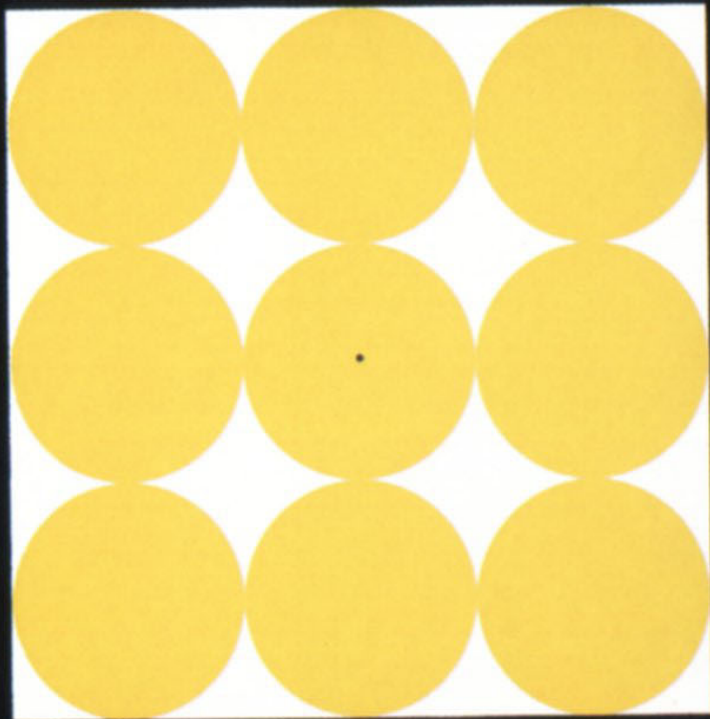






Albers: Color Studies After Effects





***Color is the most
relative medium in art.
Experience is the best
teacher of color.***

Josef Albers (1888-1976)