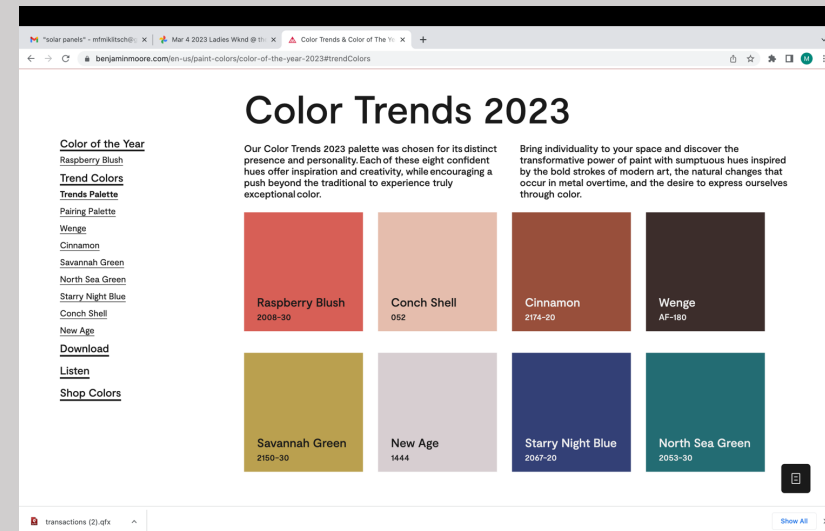
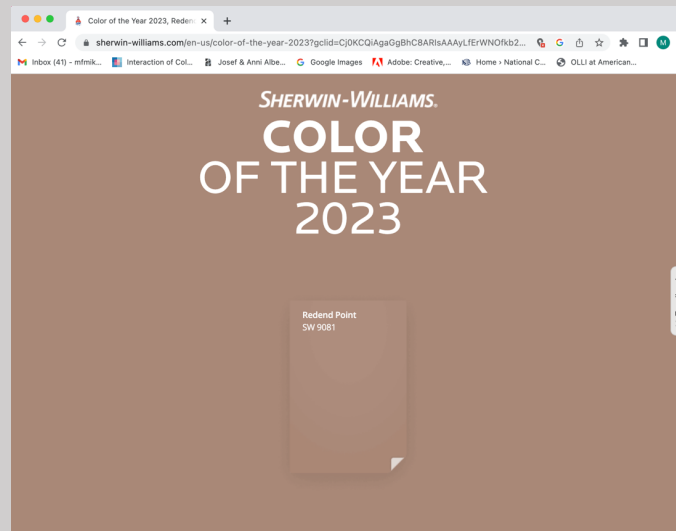
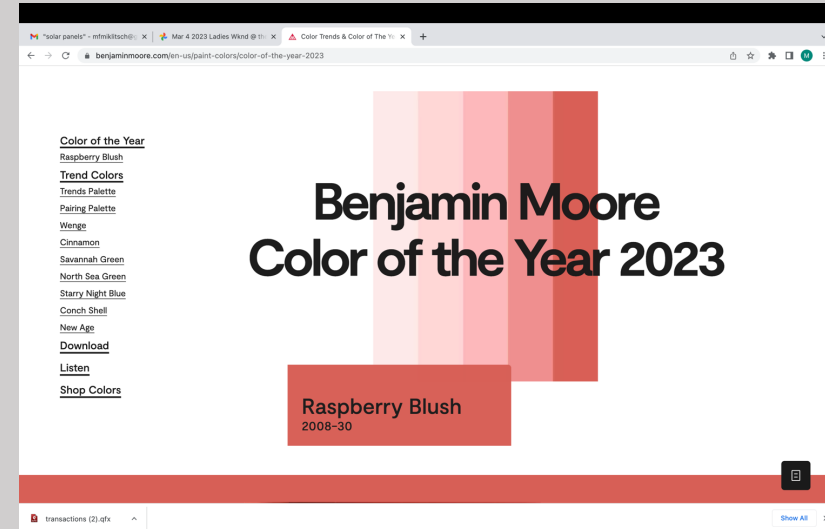
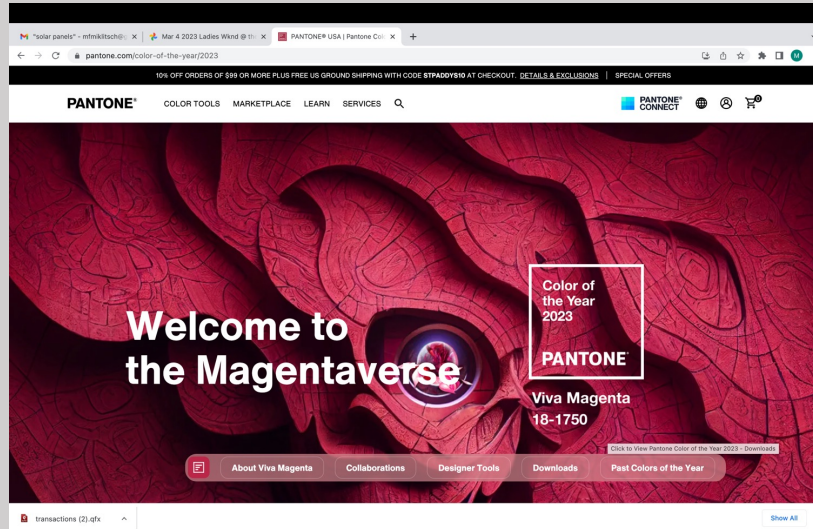


Color Theory (and Practice)

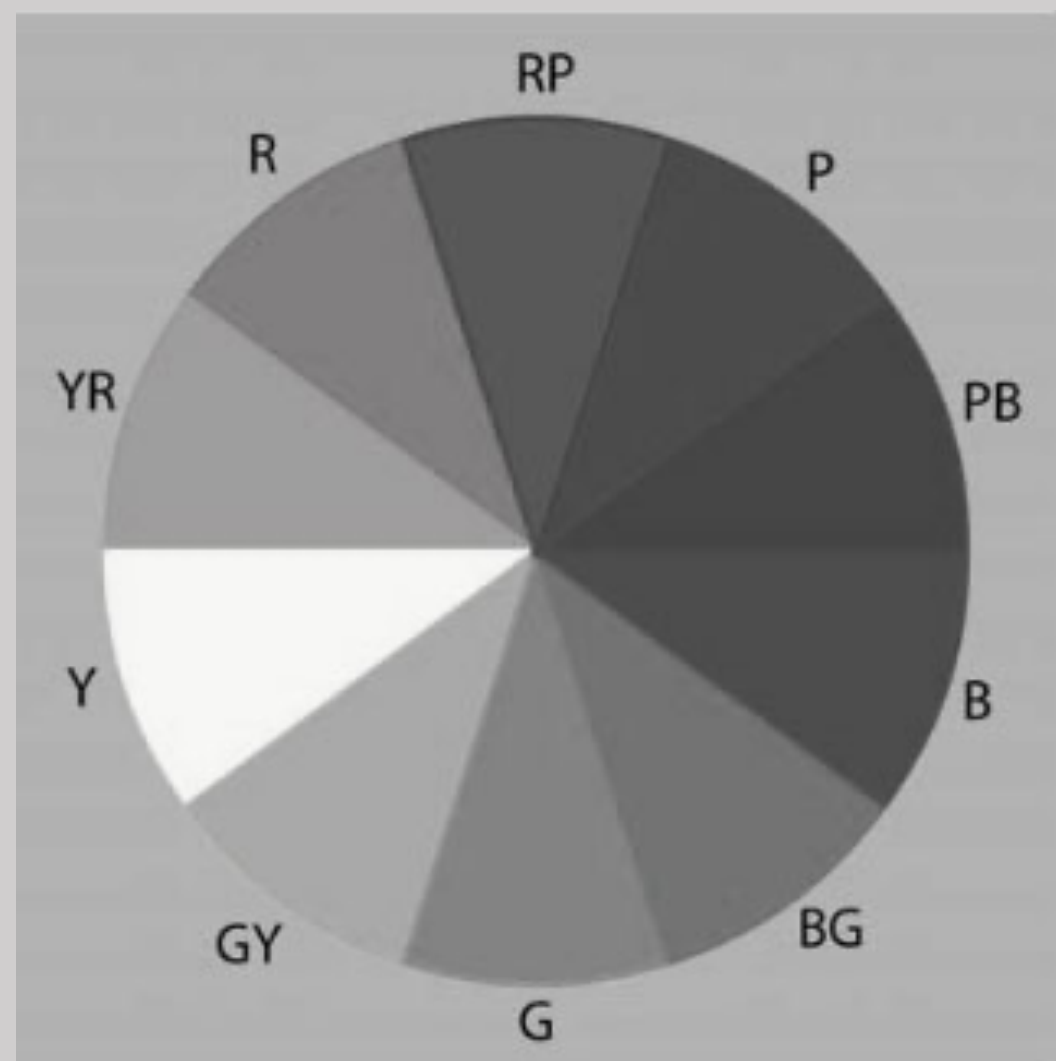
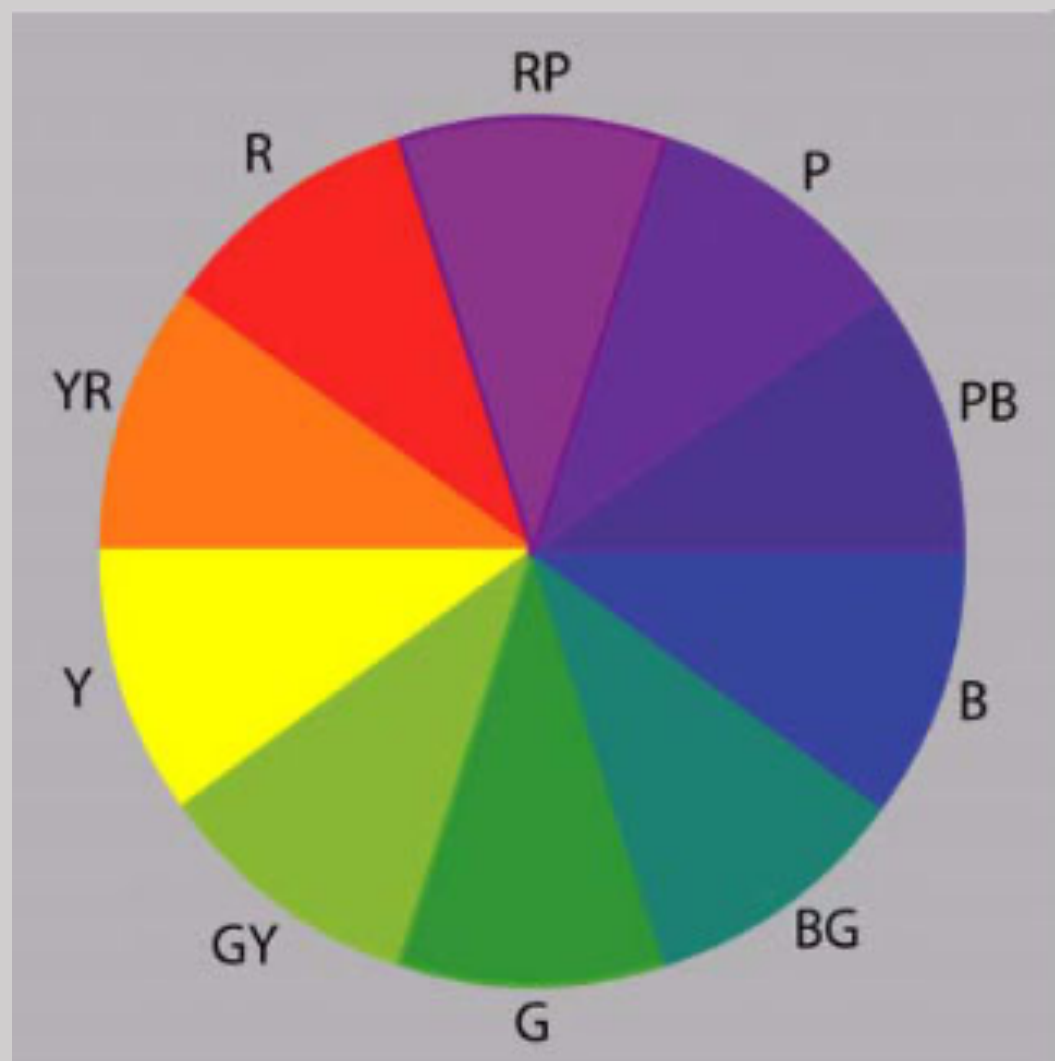
Week 2

Mary Fran Miklitsch

2023 Color of the Year



Homework from Week 1: Matching hues to gray values



MUNSELL COLOR SYSTEM

ATLAS
—OF—
COLOR CHARTS.

COPYRIGHT BY A. H. MUNSELL, 1907-1915.
PATENTED JUNE 26, 1906.

CHART
V

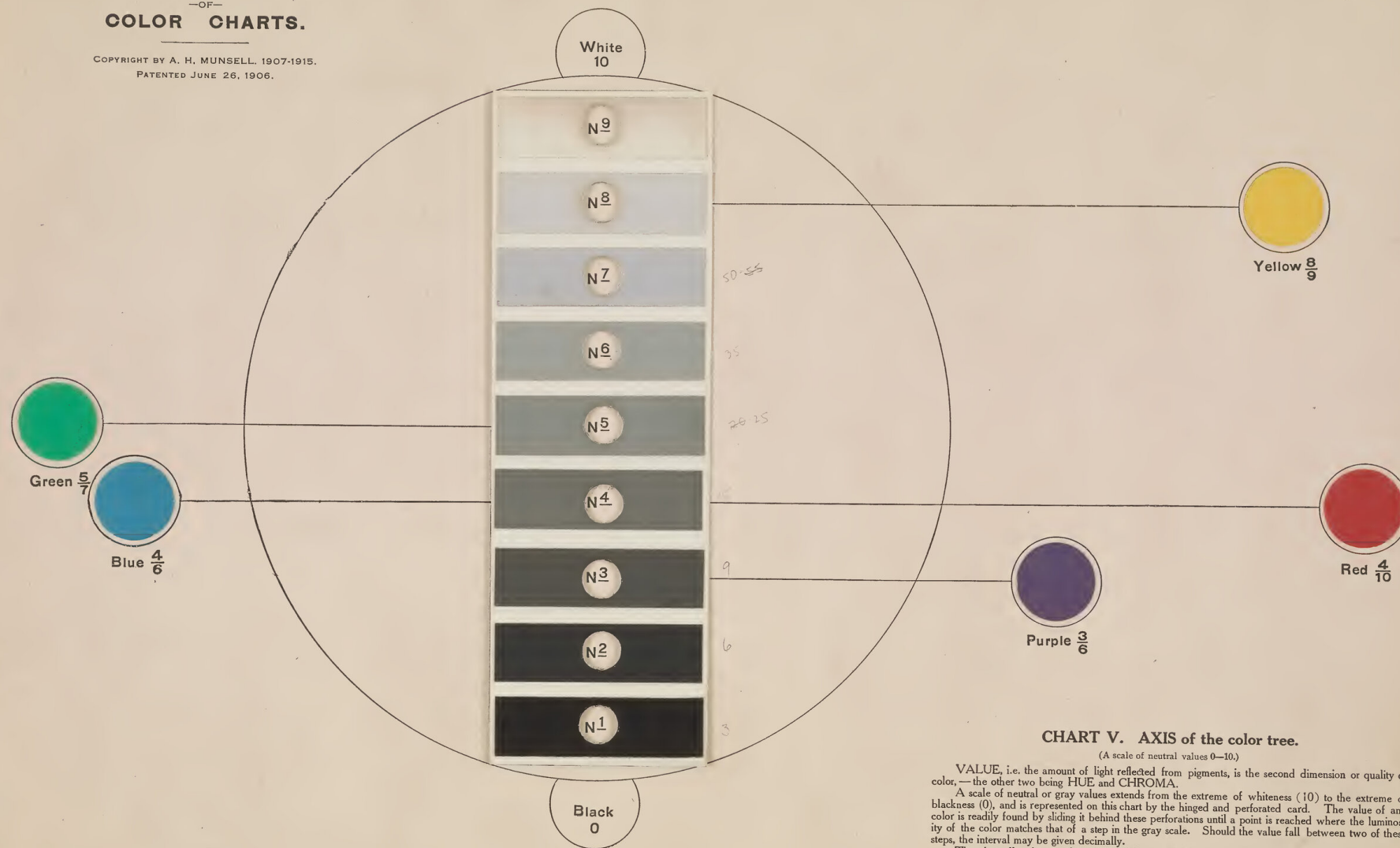


CHART V. AXIS of the color tree.

(A scale of neutral values 0—10.)

VALUE, i.e. the amount of light reflected from pigments, is the second dimension or quality of color,—the other two being HUE and CHROMA.

A scale of neutral or gray values extends from the extreme of whiteness (10) to the extreme of blackness (0), and is represented on this chart by the hinged and perforated card. The value of any color is readily found by sliding it behind these perforations until a point is reached where the luminosity of the color matches that of a step in the gray scale. Should the value fall between two of these steps, the interval may be given decimally.

Thus the yellow has a value of eight (8), green is five (5), red and blue four (4), purple three (3). Personal bias plays no part in this measured scale of value. It is established by a special instrument adopted in the course of optical measurements, at the Mass. Institute of Technology, and known as the Munsell Photometer.

These pigment colors vary not only in their VALUE, but also in their CHROMA,—as fully shown on Chart C, which explains why the color branches extending outward from the neutral axis are of uneven length. See chapters II and III of the teacher's handbook, "A COLOR NOTATION," (second edition).

PROTECT THE CHART FROM DUST AND HANDLING.

Color Theory:

Hue Saturation Value

HUE

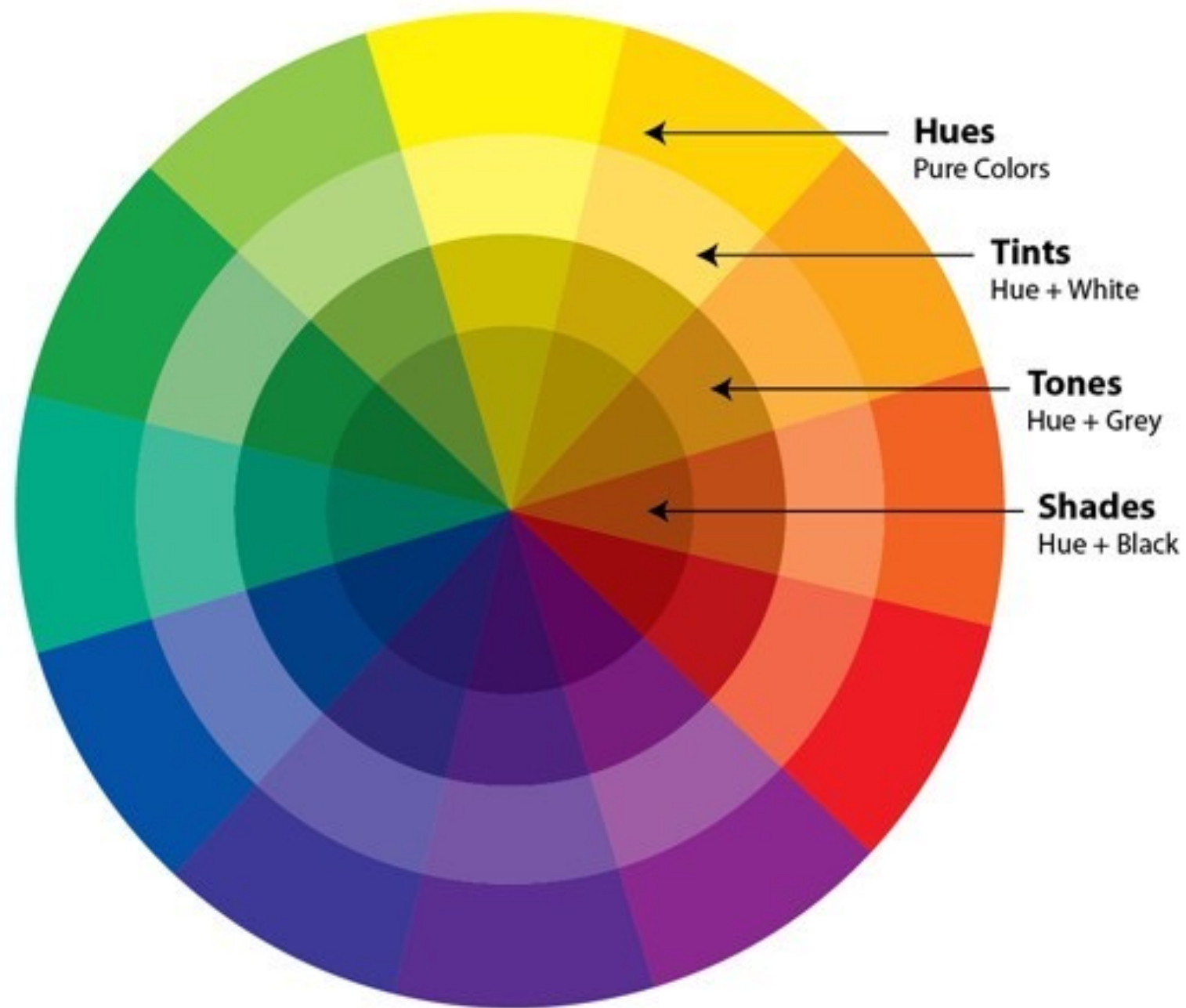


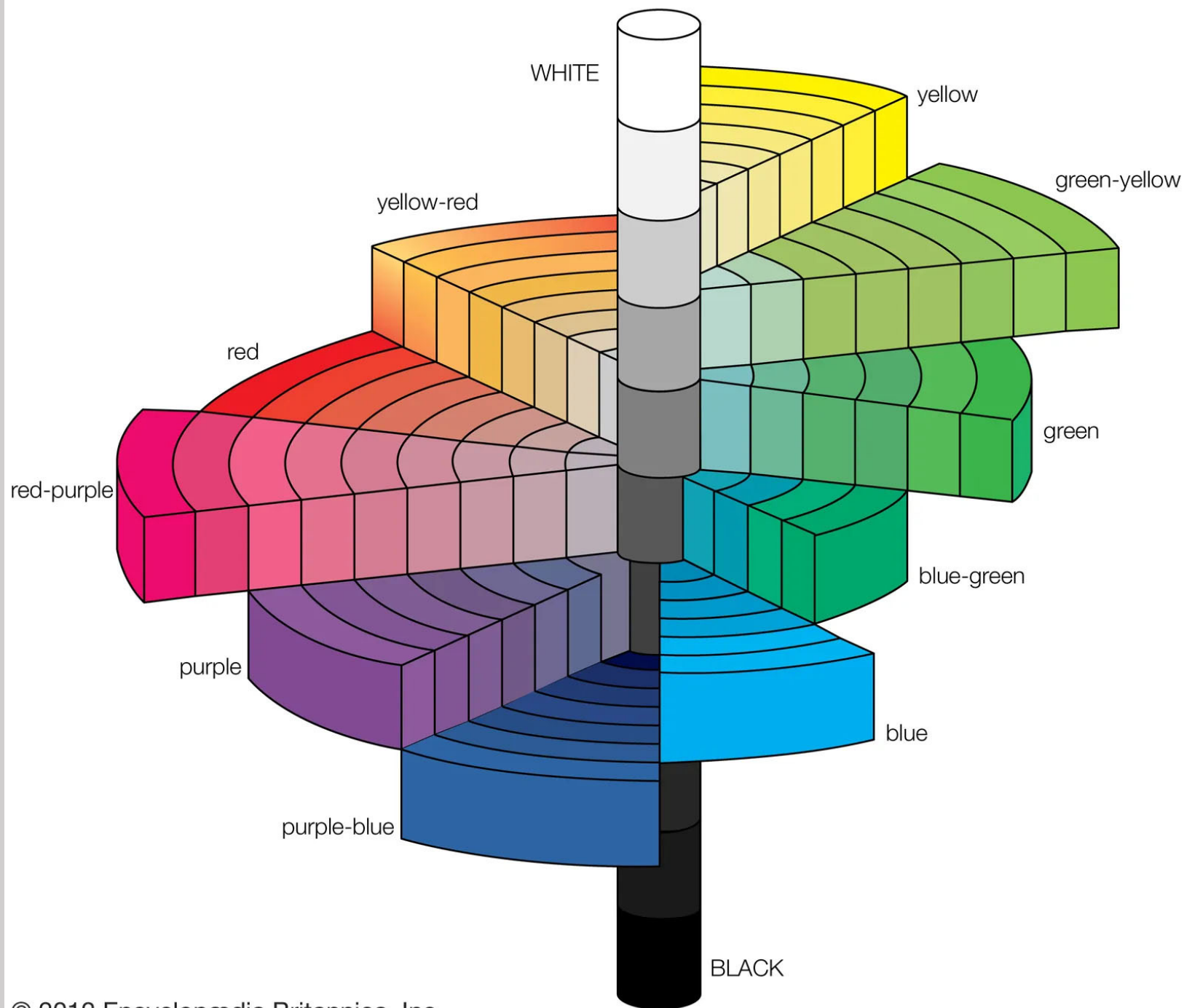
SATURATION



VALUE







MUNDELL COLOR SYSTEM

ATLAS
COLOR CHARTS.

Copyright © 2004 John Wiley & Sons, Inc.

CHART
50

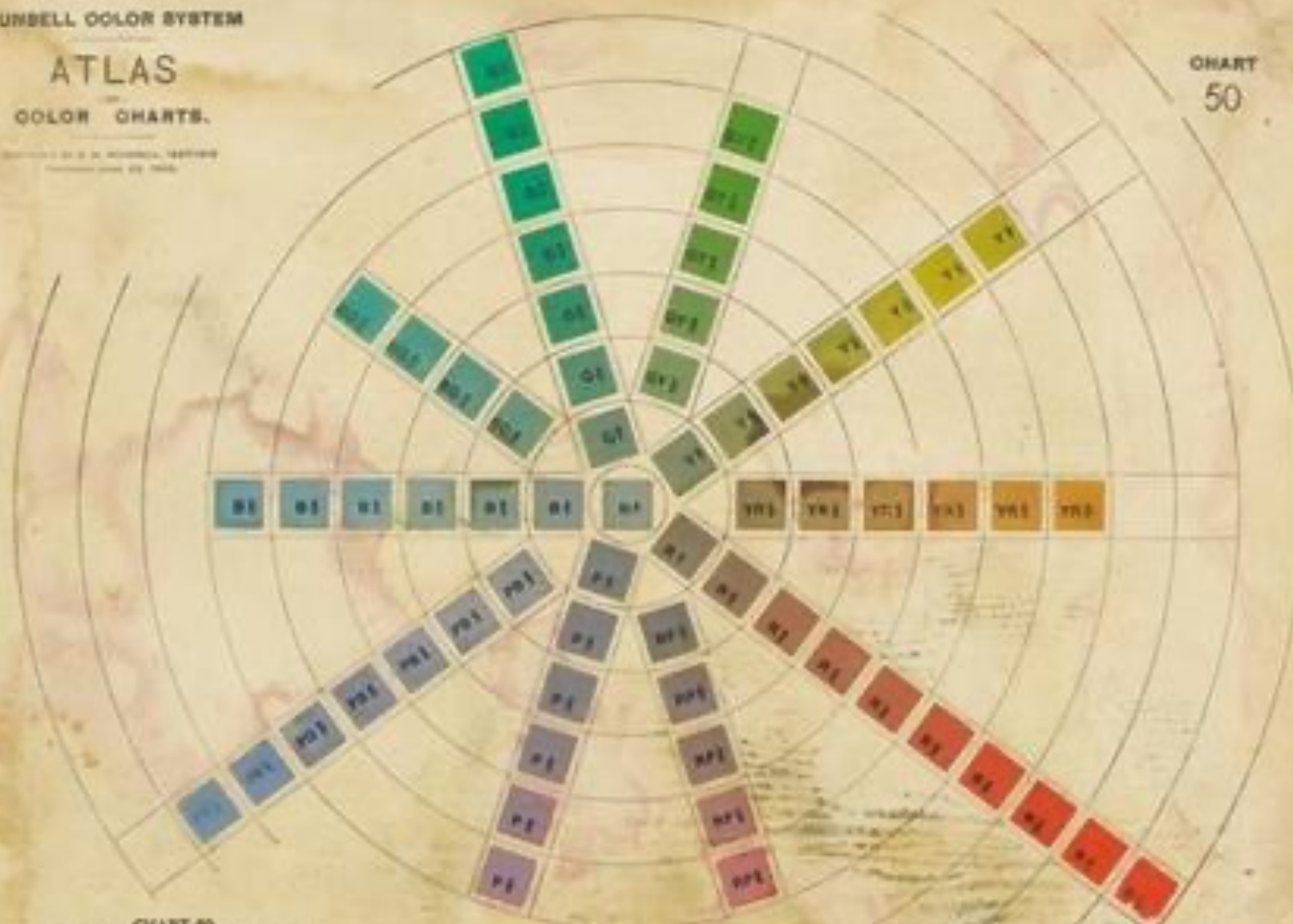


CHART 80

Copyright © 2004 John Wiley & Sons, Ltd.

The Chinese's interest ending through the terms of the Cuban Missile-shooting off when at 1962.2.19, the Chinese's interest ended at 1962.2.19 and 1962.2.19.

Each subject was given 10 min of practice trials before the actual testing. A mean of three attempts for the division of 4 by patient 10, and three attempts for patient 11, were used for the analysis of the data. The 10 trials were divided again which is a phrasal sentence 10% of normal rate and 90% of the amount of normal sentence.

Each circle stands for the actual water in a SCALE OF 10:1. A vertical line through the center of each circle indicates the water level. The number opposite the line indicates the depth of the water in feet. The numbers 10, 20, 30, 40, 50, 60, 70, 80, 90, 100, 110, 120, 130, 140, 150, 160, 170, 180, 190, 200, 210, 220, 230, 240, 250, 260, 270, 280, 290, 300, 310, 320, 330, 340, 350, 360, 370, 380, 390, 400, 410, 420, 430, 440, 450, 460, 470, 480, 490, 500, 510, 520, 530, 540, 550, 560, 570, 580, 590, 600, 610, 620, 630, 640, 650, 660, 670, 680, 690, 700, 710, 720, 730, 740, 750, 760, 770, 780, 790, 800, 810, 820, 830, 840, 850, 860, 870, 880, 890, 900, 910, 920, 930, 940, 950, 960, 970, 980, 990, 1000, 1010, 1020, 1030, 1040, 1050, 1060, 1070, 1080, 1090, 1100, 1110, 1120, 1130, 1140, 1150, 1160, 1170, 1180, 1190, 1200, 1210, 1220, 1230, 1240, 1250, 1260, 1270, 1280, 1290, 1300, 1310, 1320, 1330, 1340, 1350, 1360, 1370, 1380, 1390, 1400, 1410, 1420, 1430, 1440, 1450, 1460, 1470, 1480, 1490, 1500, 1510, 1520, 1530, 1540, 1550, 1560, 1570, 1580, 1590, 1600, 1610, 1620, 1630, 1640, 1650, 1660, 1670, 1680, 1690, 1700, 1710, 1720, 1730, 1740, 1750, 1760, 1770, 1780, 1790, 1800, 1810, 1820, 1830, 1840, 1850, 1860, 1870, 1880, 1890, 1900, 1910, 1920, 1930, 1940, 1950, 1960, 1970, 1980, 1990, 2000, 2010, 2020, 2030, 2040, 2050, 2060, 2070, 2080, 2090, 2100, 2110, 2120, 2130, 2140, 2150, 2160, 2170, 2180, 2190, 2200, 2210, 2220, 2230, 2240, 2250, 2260, 2270, 2280, 2290, 2300, 2310, 2320, 2330, 2340, 2350, 2360, 2370, 2380, 2390, 2400, 2410, 2420, 2430, 2440, 2450, 2460, 2470, 2480, 2490, 2500, 2510, 2520, 2530, 2540, 2550, 2560, 2570, 2580, 2590, 2600, 2610, 2620, 2630, 2640, 2650, 2660, 2670, 2680, 2690, 2700, 2710, 2720, 2730, 2740, 2750, 2760, 2770, 2780, 2790, 2800, 2810, 2820, 2830, 2840, 2850, 2860, 2870, 2880, 2890, 2900, 2910, 2920, 2930, 2940, 2950, 2960, 2970, 2980, 2990, 3000, 3010, 3020, 3030, 3040, 3050, 3060, 3070, 3080, 3090, 3100, 3110, 3120, 3130, 3140, 3150, 3160, 3170, 3180, 3190, 3200, 3210, 3220, 3230, 3240, 3250, 3260, 3270, 3280, 3290, 3300, 3310, 3320, 3330, 3340, 3350, 3360, 3370, 3380, 3390, 3400, 3410, 3420, 3430, 3440, 3450, 3460, 3470, 3480, 3490, 3500, 3510, 3520, 3530, 3540, 3550, 3560, 3570, 3580, 3590, 3600, 3610, 3620, 3630, 3640, 3650, 3660, 3670, 3680, 3690, 3700, 3710, 3720, 3730, 3740, 3750, 3760, 3770, 3780, 3790, 3800, 3810, 3820, 3830, 3840, 3850, 3860, 3870, 3880, 3890, 3900, 3910, 3920, 3930, 3940, 3950, 3960, 3970, 3980, 3990, 4000, 4010, 4020, 4030, 4040, 4050, 4060, 4070, 4080, 4090, 4100, 4110, 4120, 4130, 4140, 4150, 4160, 4170, 4180, 4190, 4200, 4210, 4220, 4230, 4240, 4250, 4260, 4270, 4280, 4290, 4300, 4310, 4320, 4330, 4340, 4350, 4360, 4370, 4380, 4390, 4400, 4410, 4420, 4430, 4440, 4450, 4460, 4470, 4480, 4490, 4500, 4510, 4520, 4530, 4540, 4550, 4560, 4570, 4580, 4590, 4600, 4610, 4620, 4630, 4640, 4650, 4660, 4670, 4680, 4690, 4700, 4710, 4720, 4730, 4740, 4750, 4760, 4770, 4780, 4790, 4800, 4810, 4820, 4830, 4840, 4850, 4860, 4870, 4880, 4890, 4900, 4910, 4920, 4930, 4940, 4950, 4960, 4970, 4980, 4990, 5000, 5010, 5020, 5030, 5040, 5050, 5060, 5070, 5080, 5090, 5100, 5110, 5120, 5130, 5140, 5150, 5160, 5170, 5180, 5190, 5200, 5210, 5220, 5230, 5240, 5250, 5260, 5270, 5280, 5290, 5300, 5310, 5320, 5330, 5340, 5350, 5360, 5370, 5380, 5390, 5400, 5410, 5420, 5430, 5440, 5450, 5460, 5470, 5480, 5490, 5500, 5510, 5520, 5530, 5540, 5550, 5560, 5570, 5580, 5590, 5600, 5610, 5620, 5630, 5640, 5650, 5660, 5670, 5680, 5690, 5700, 5710, 5720, 5730, 5740, 5750, 5760, 5770, 5780, 5790, 5800, 5810, 5820, 5830, 5840, 5850, 5860, 5870, 5880, 5890, 5900, 5910, 5920, 5930, 5940, 5950, 5960, 5970, 5980, 5990, 6000, 6010, 6020, 6030, 6040, 6050, 6060, 6070, 6080, 6090, 6100, 6110, 6120, 6130, 6140, 6150, 6160, 6170, 6180, 6190, 6200, 6210, 6220, 6230, 6240, 6250, 6260, 6270, 6280, 6290, 6300, 6310, 6320, 6330, 6340, 6350, 6360, 6370, 6380, 6390, 6400, 6410, 6420, 6430, 6440, 6450, 6460, 6470, 6480, 6490, 6500, 6510, 6520, 6530, 6540, 6550, 6560, 6570, 6580, 6590, 6600, 6610, 6620, 6630, 6640, 6650, 6660, 6670, 6680, 6690, 6700, 6710, 6720, 6730, 6740, 6750, 6760, 6770, 6780, 6790, 6800, 6810, 6820, 6830, 6840, 6850, 6860, 6870, 6880, 6890, 6900, 6910, 6920, 69

ABSTRACT. *A representation of a group G is called irreducible and infinite, if it is not isomorphic to a direct sum of copies of $\mathbb{C}G$, and G is not a compactly generated group. We study the structure of irreducible and infinite representations of G in the case where G is a direct product of a free group and a finite group.*

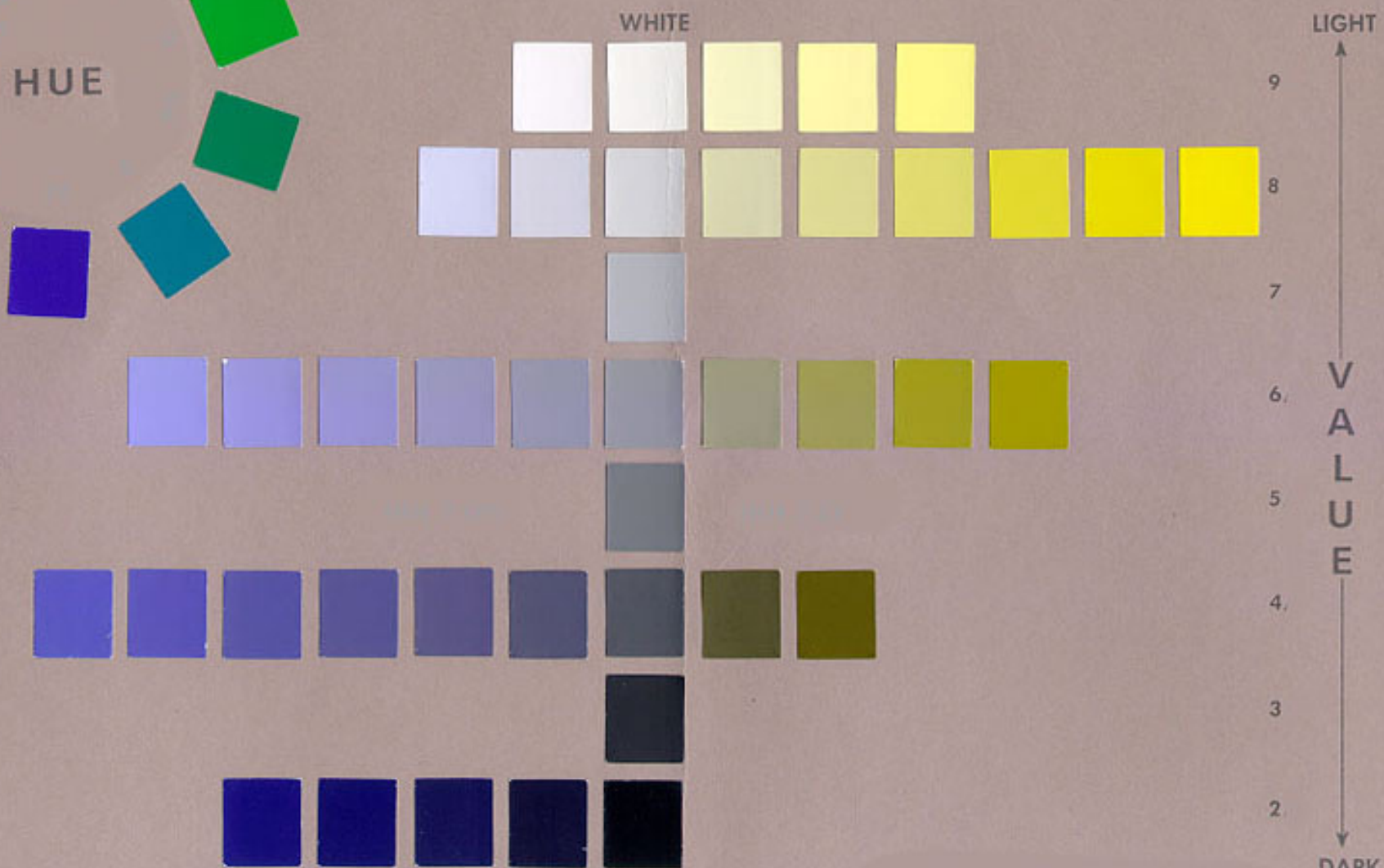
A 3D-ANOVA of variance was conducted with processing changes (visual addition) as a fixed factor, N , C , V , R , of the different sets as between factors (F_1 , F_2 , F_3). As such, the qualitative and quantitative representation of the input by numerical symbols, known as verbal

APPROXIMATELY 10% OF THE TOTAL POPULATION OF THE UNITED STATES IS OF ITALIAN ORIGIN. THE ITALIAN AMERICAN COMMUNITY IS THE LARGEST OF ANY ONE NATIONALITY IN THE UNITED STATES. THE ITALIAN AMERICAN COMMUNITY IS THE LARGEST OF ANY ONE NATIONALITY IN THE UNITED STATES.

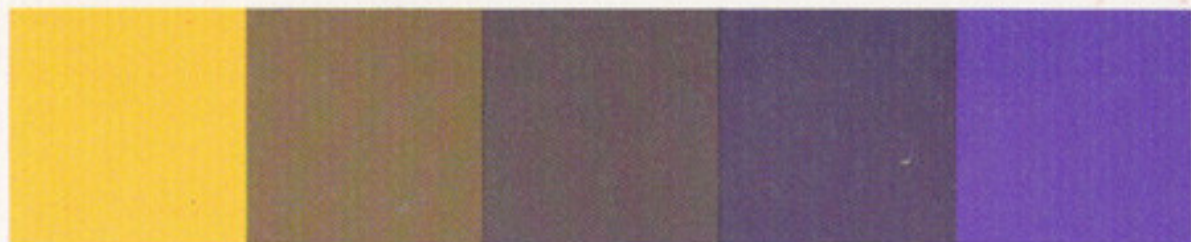


INTENSITY (CHROMA)

WEAK ————— TO —————> STRONGER



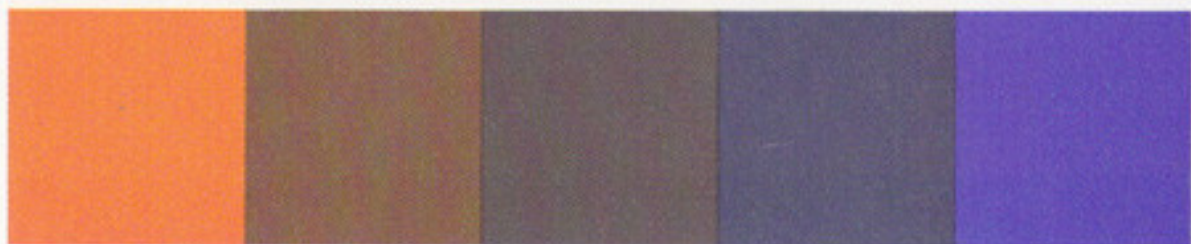




23



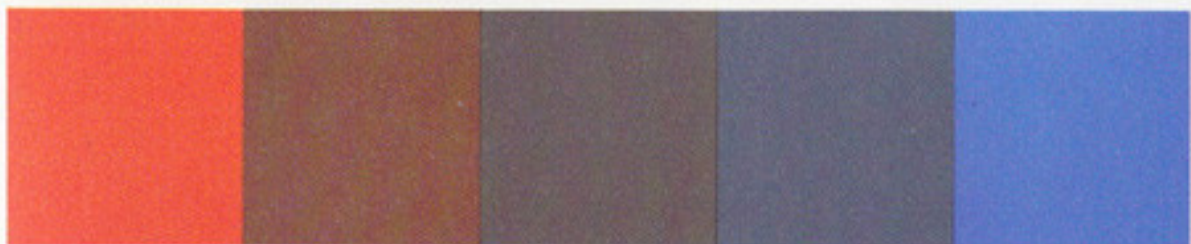
26



24



27



25



28

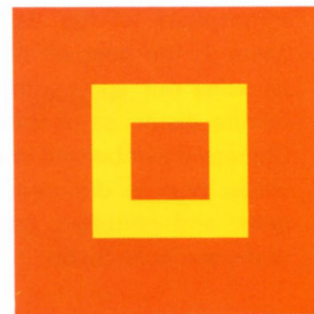
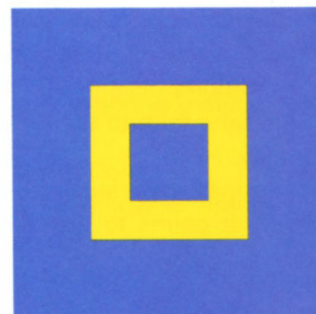
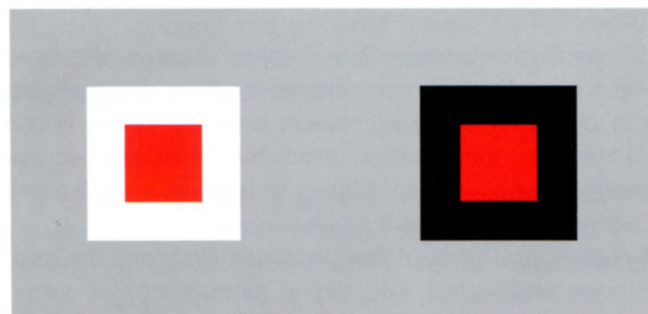
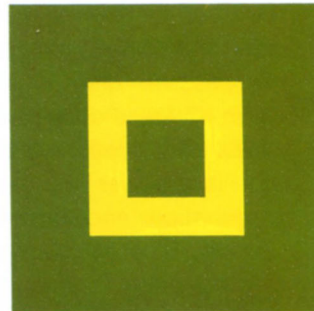
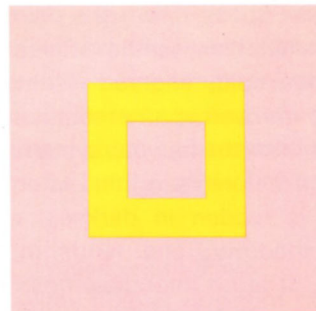
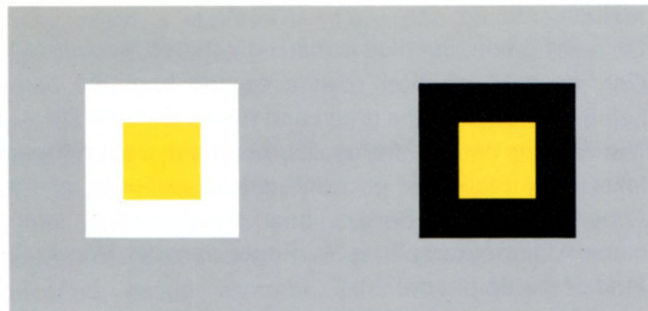
Mixing Complementary Colors in Adobe Illustrator

Albers: Color Deceives

***Color is the most
relative medium in art.
Experience is the best
teacher of color.***

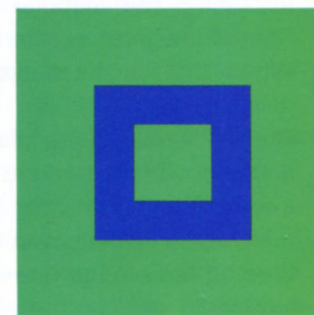
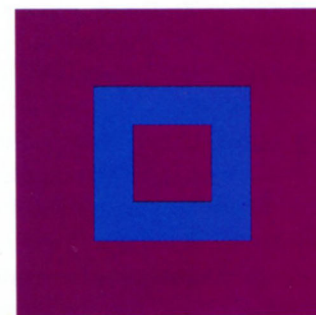
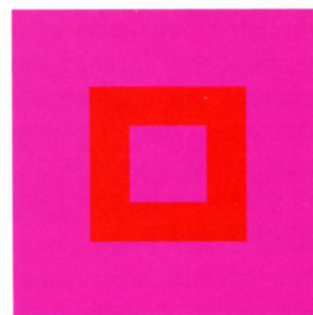
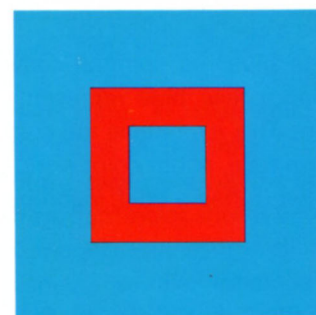
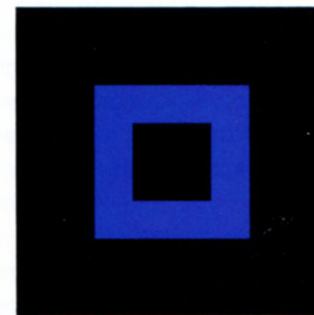
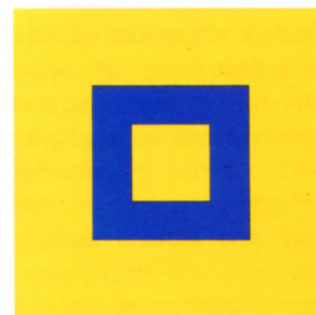
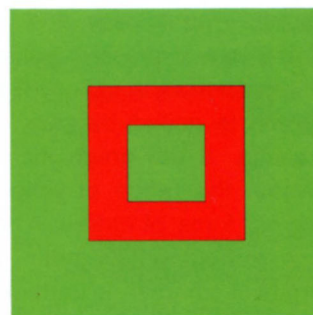
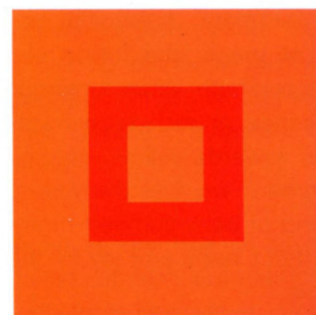
Josef Albers (1888-1976)

One color appears as two



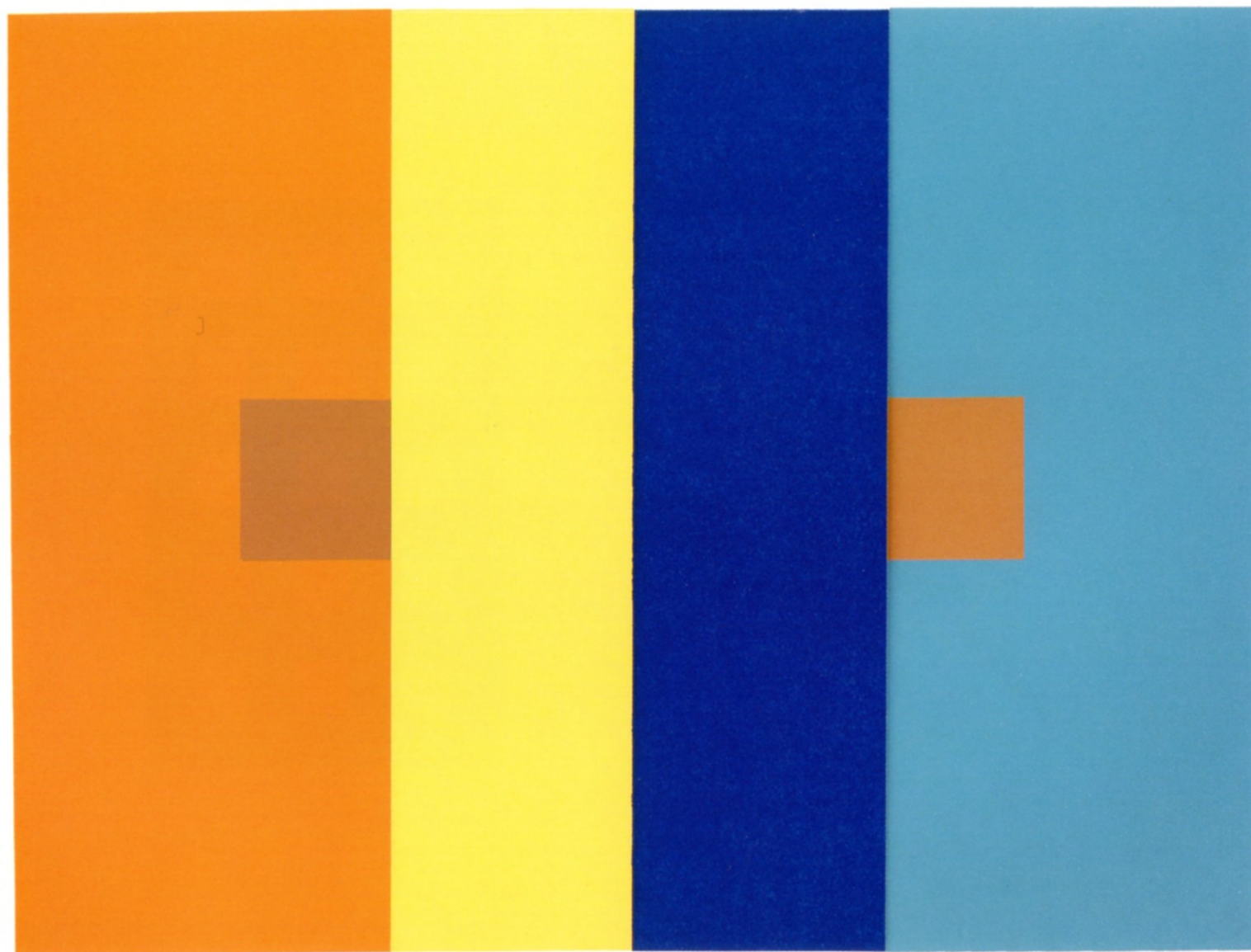
58-59

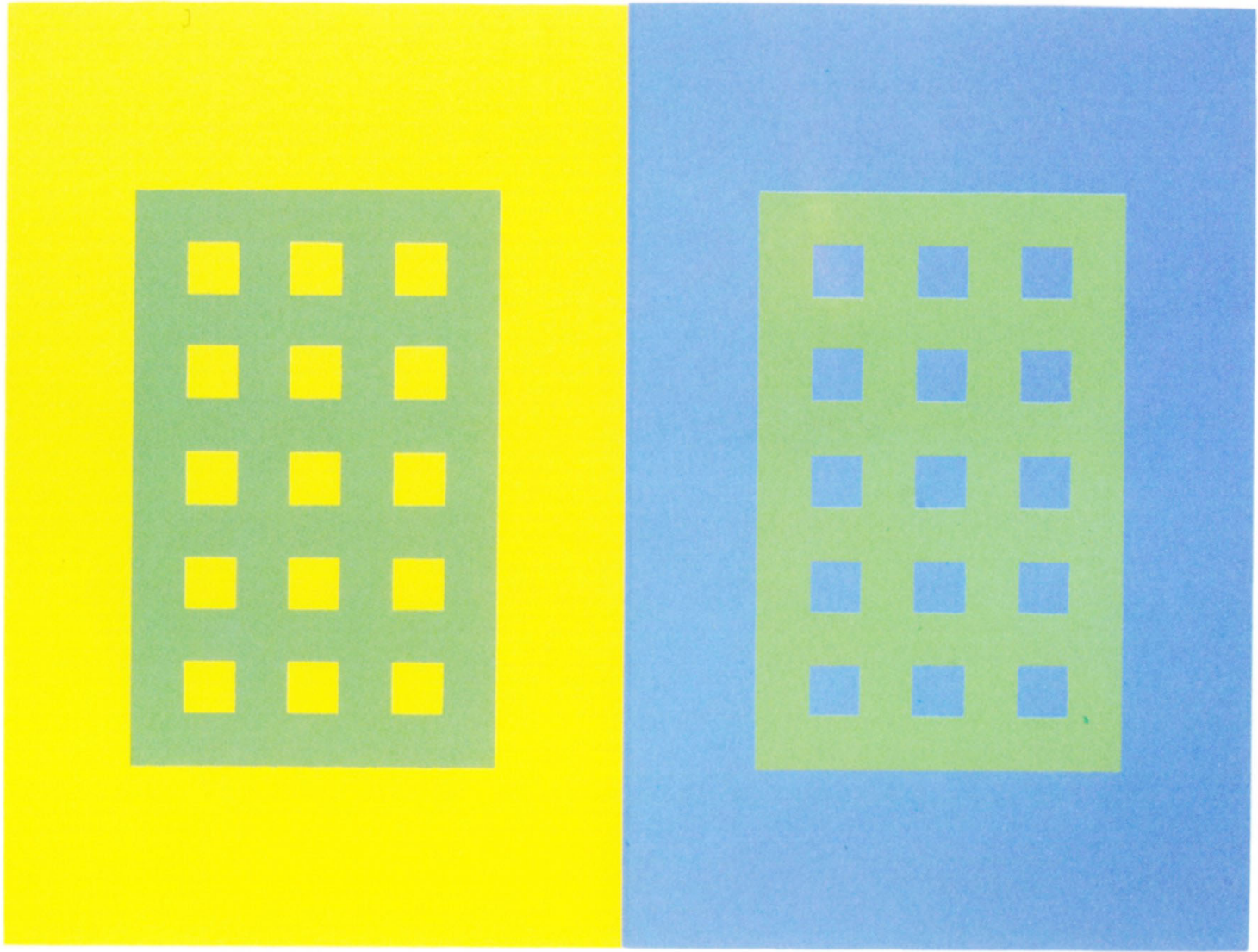
60-63

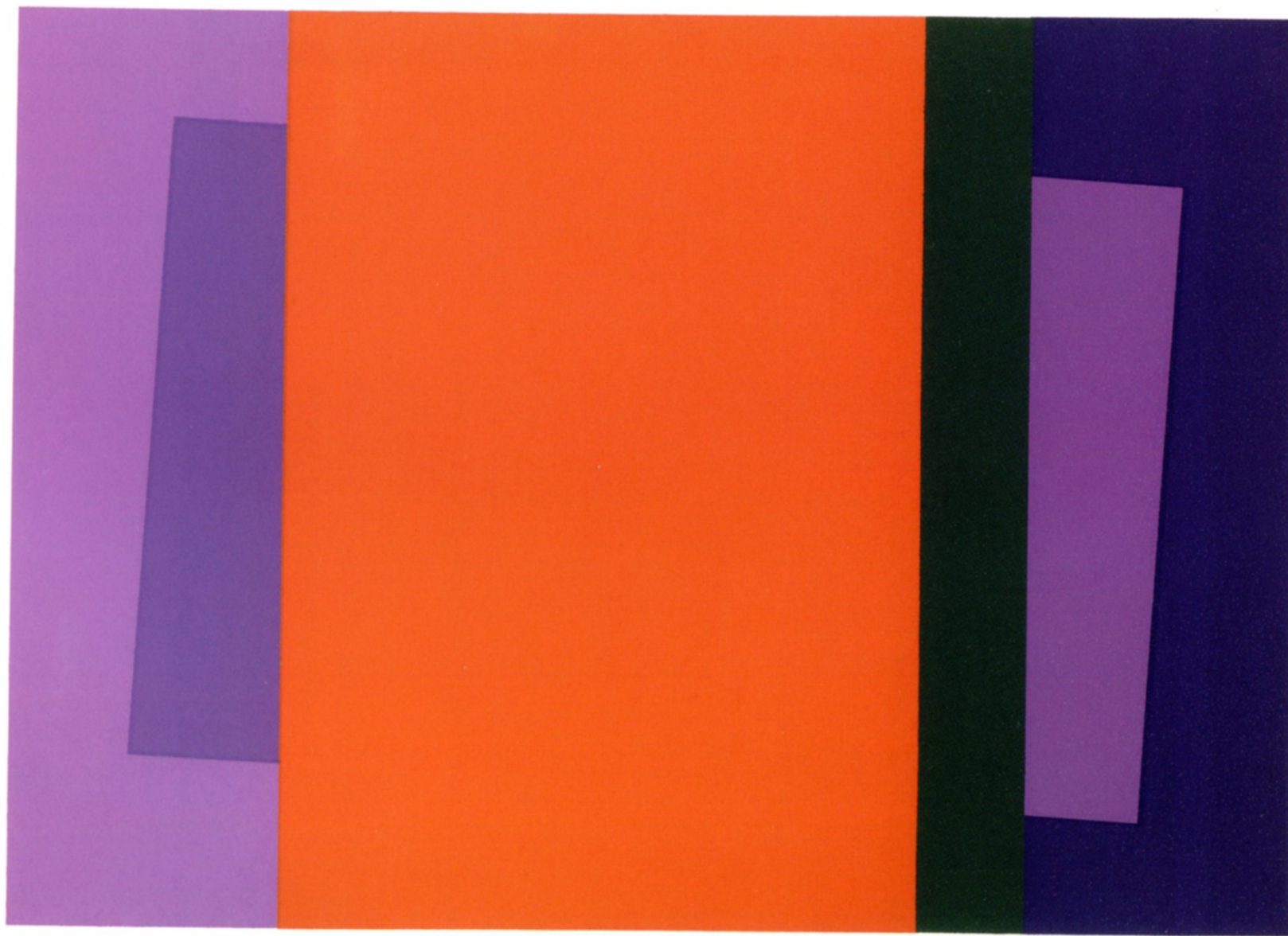


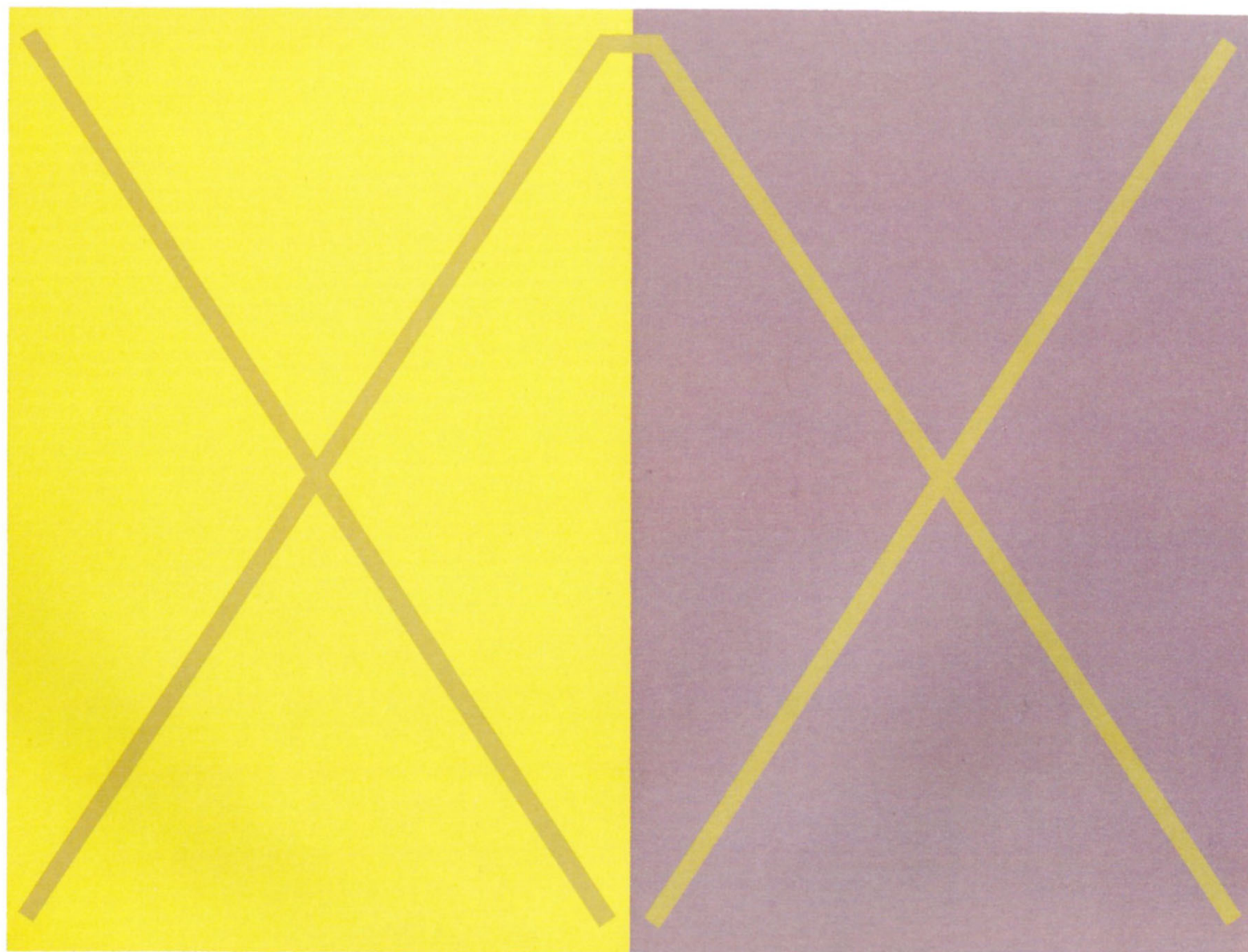
64-67

68-71

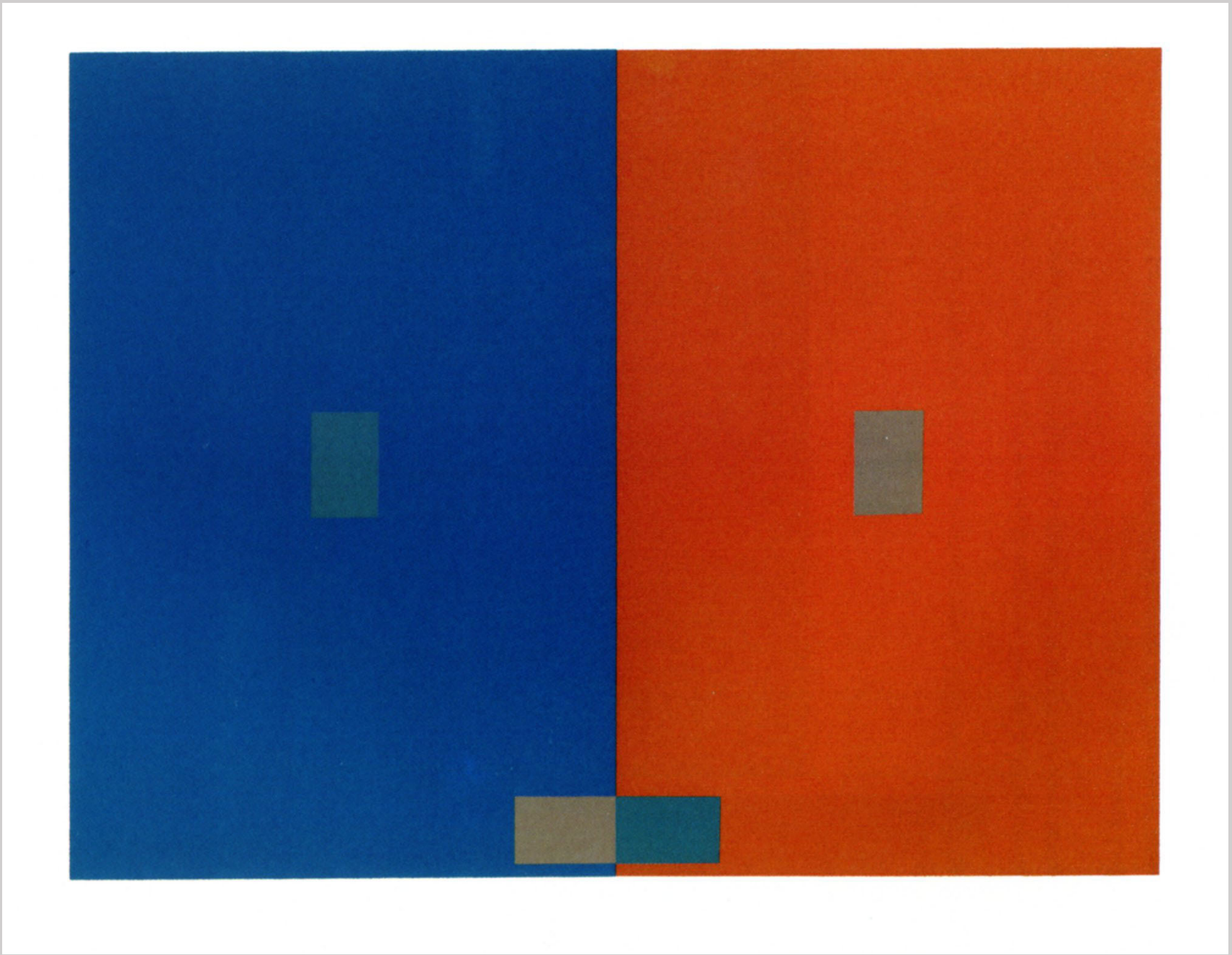


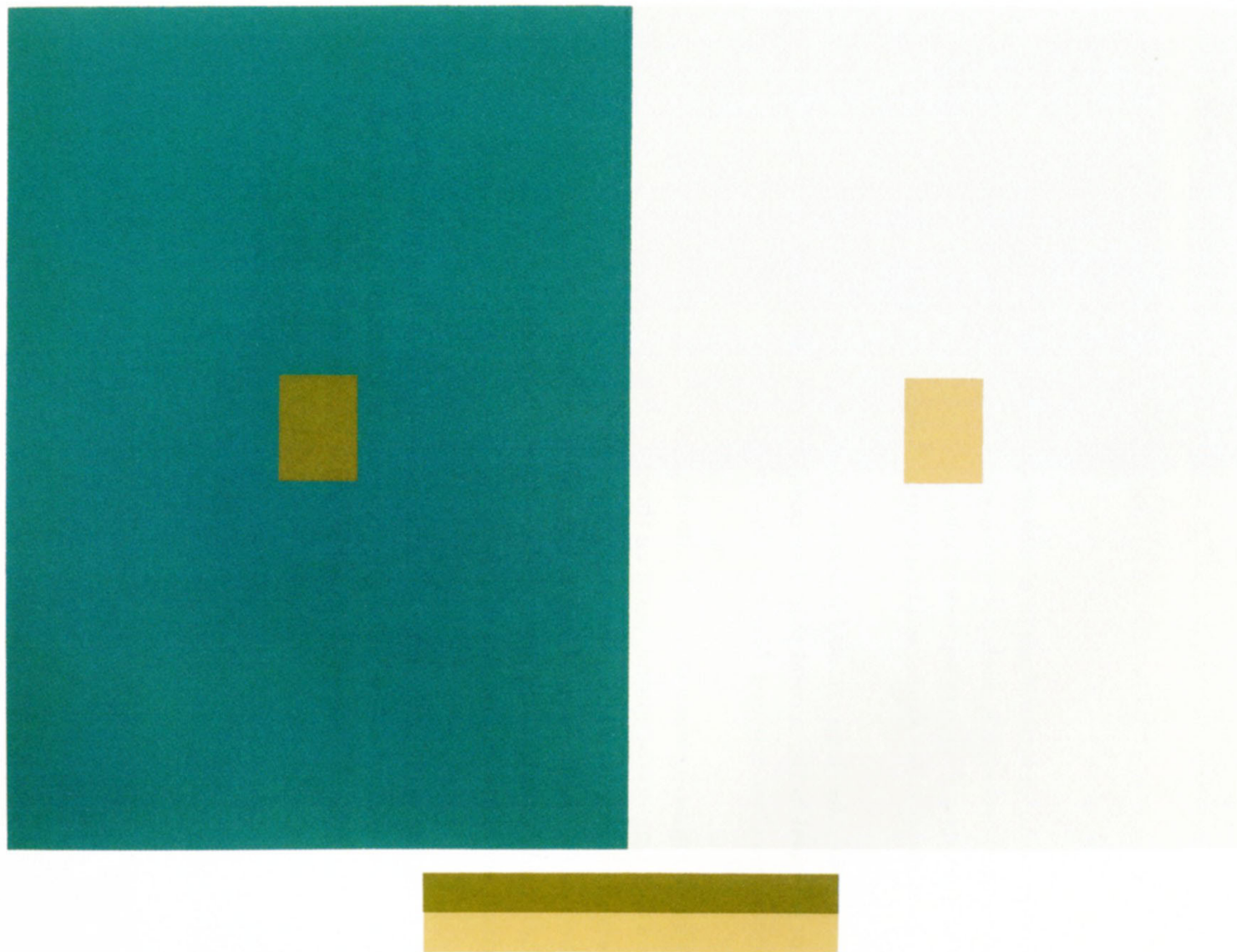


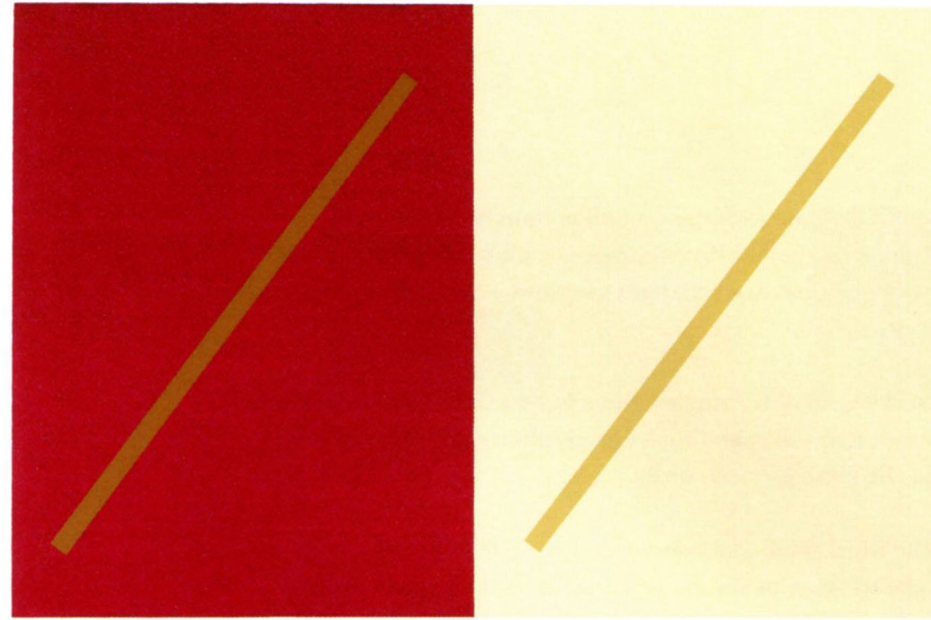


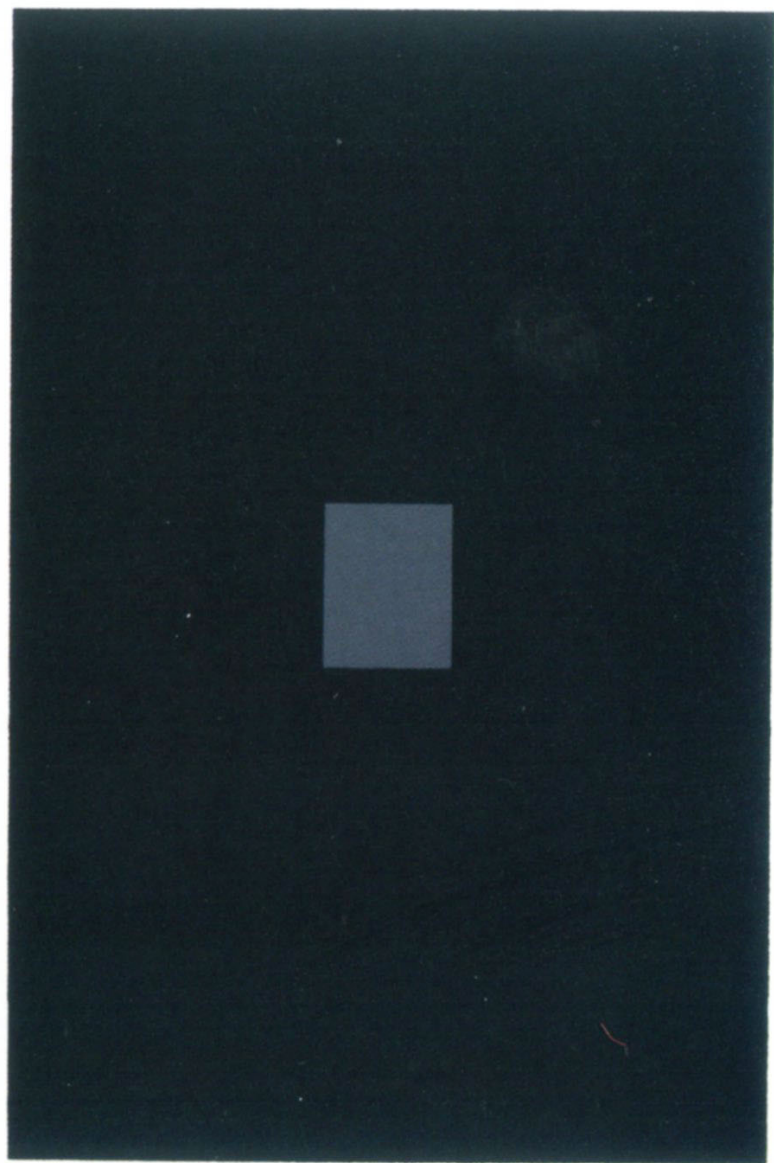


Two colors appear as one









Color Practice: One Color Becomes Two

One Color Becomes Two

This hands on tutorial demonstrates
how one color can appear as two,
based on Josef Albers' *Interaction of
Color*.

Inbox (41) - mfmiklitsch@gmail.com - Gmail
<https://mail.google.com/mail/u/0/#inbox>

