

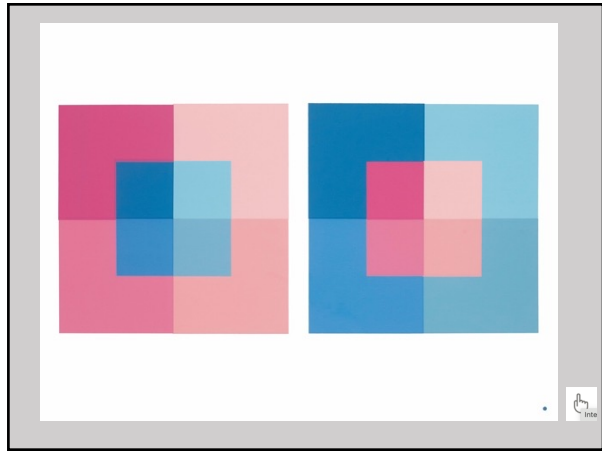
Color Theory (and Practice) Week 6

Mary Fran Miklitsch

1

Color Intervals and Transformation

2



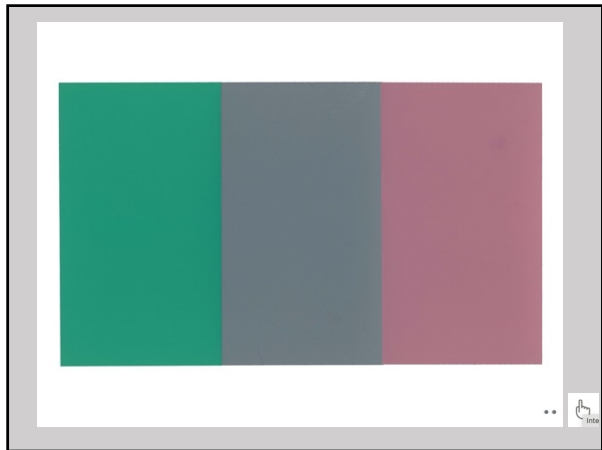
3

Intersection

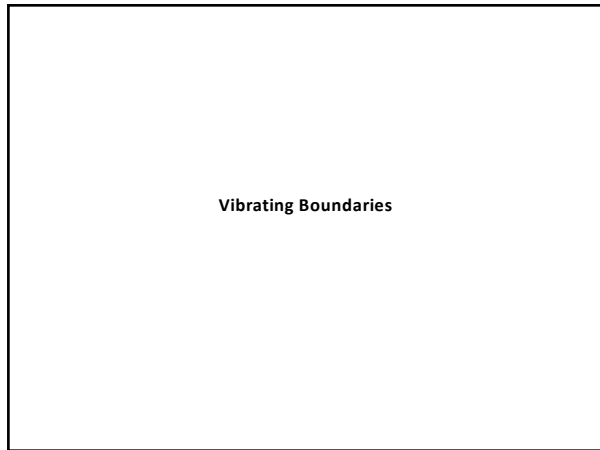
4



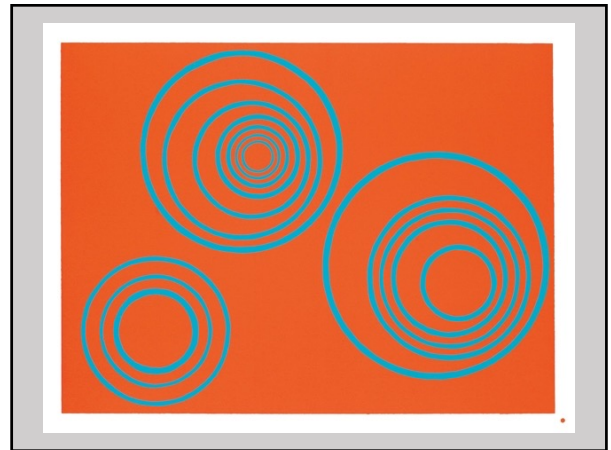
5



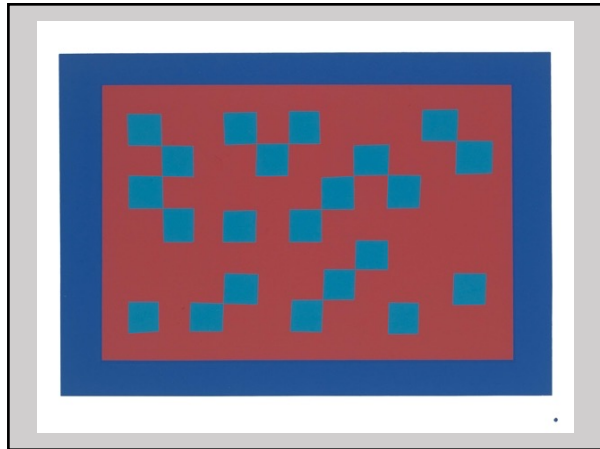
6



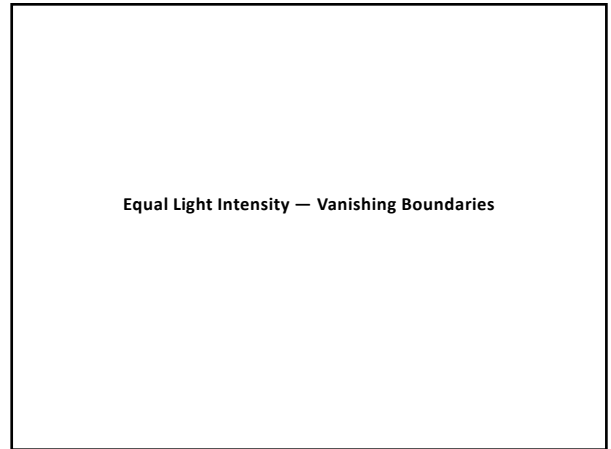
7



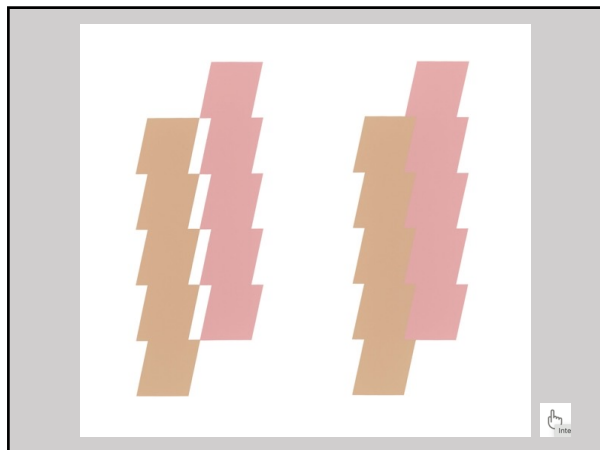
8



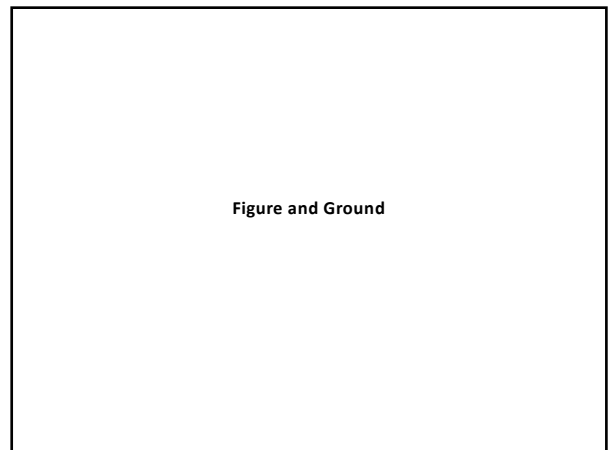
9



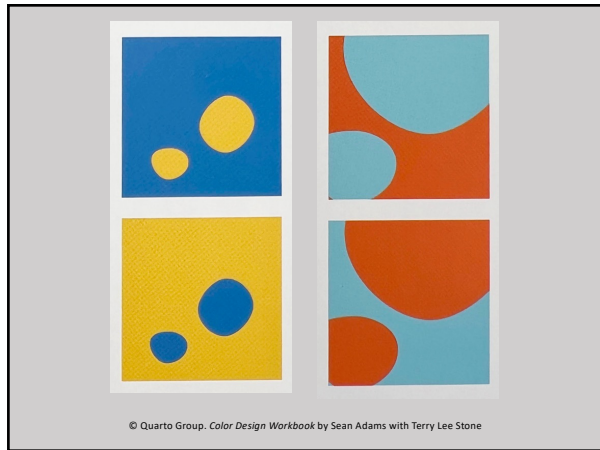
10



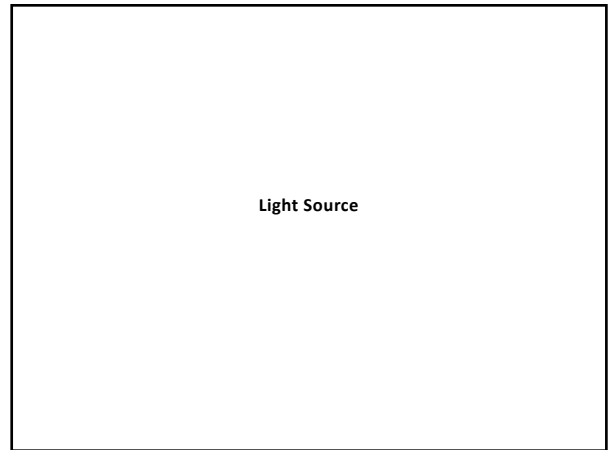
11



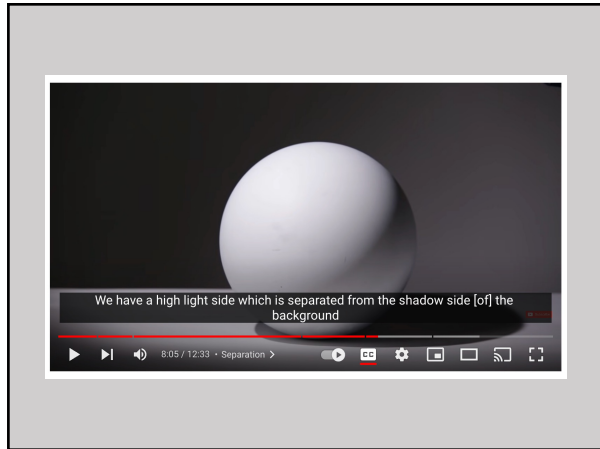
12



13



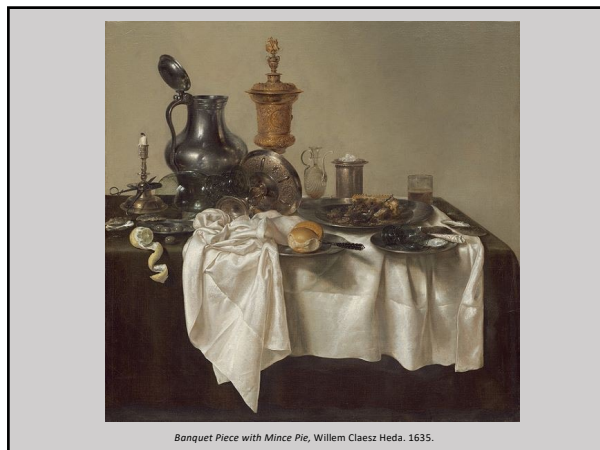
14



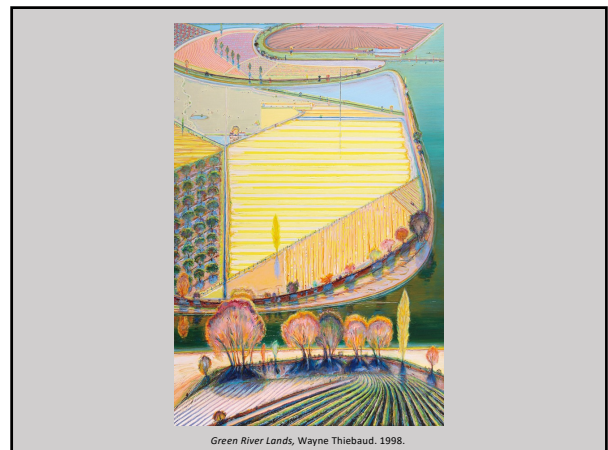
15



16



17



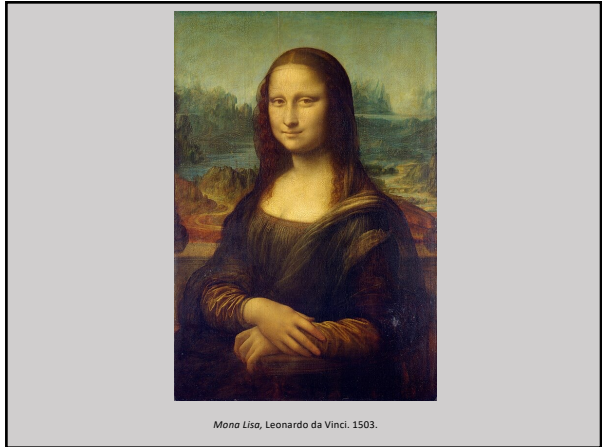
18

Atmospheric (or Aerial) Perspective

19

- Clues in Atmospheric Perspective**
- Relative size
 - Relative clarity
 - Interposition
 - Texture gradient
 - Relative height
 - Parallel lines converge in distance
 - Light and shadow
 - Diminishing contrast
 - Values become lighter as objects recede
 - Colors fade and shift to cooler in distance

20



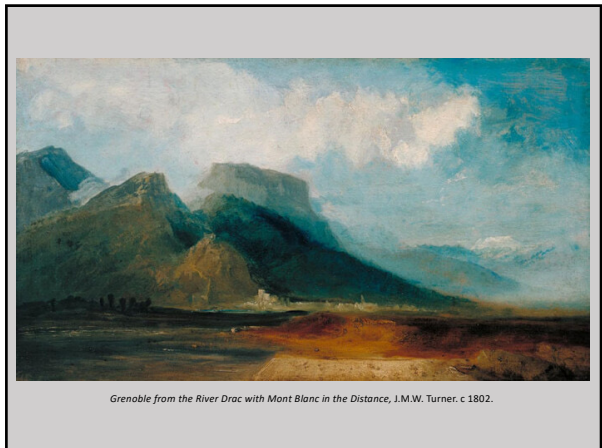
Mona Lisa, Leonardo da Vinci. 1503.

21



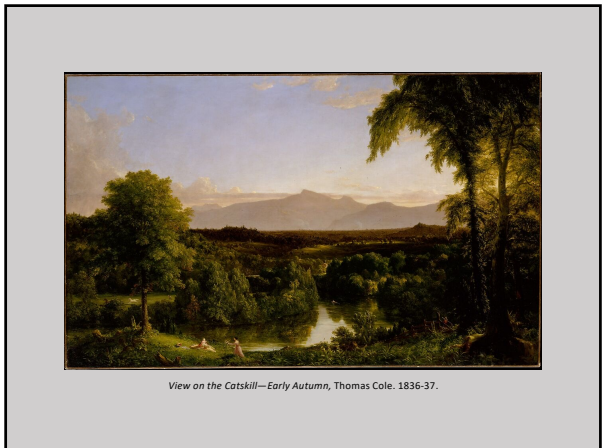
Holy Family with St. Anne and the Infant St. John the Baptist, Agnolo Bronzino. c. 1550.

22



Grenoble from the River Drac with Mont Blanc in the Distance, J.M.W. Turner. c. 1802.

23



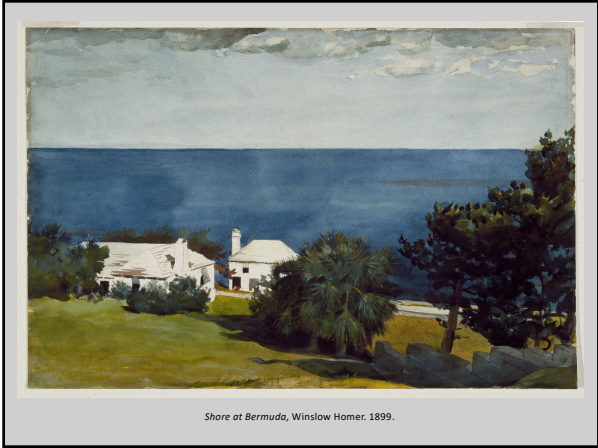
View on the Catskill—Early Autumn, Thomas Cole. 1836-37.

24



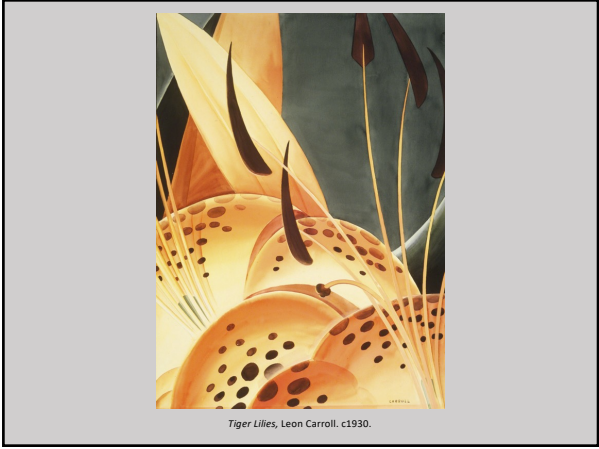
Black Mesa Landscape / Out Back of Marie's II, Georgia O'Keefe. 1930.

25



Shore at Bermuda, Winslow Homer. 1899.

26



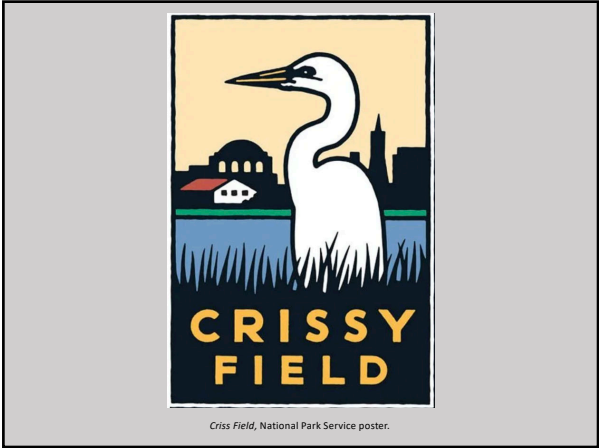
Tiger Lilies, Leon Carroll. c1930.

27



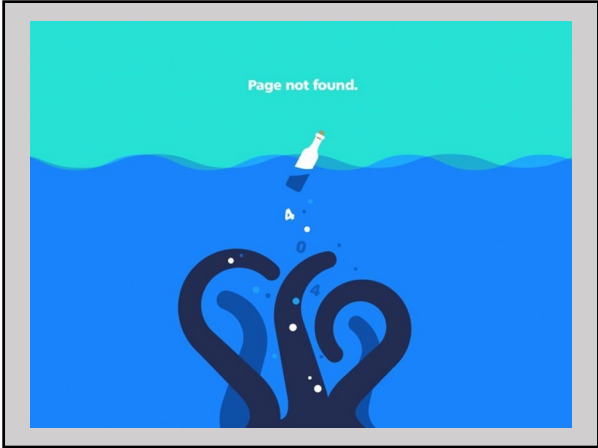
The Great Migration (Panel 45), Jacob Lawrence. 1940-41.

28



Crissy Field, National Park Service poster.

29



30